

JUMITECH

DALI 4Ch LED Dimmer CV

Datasheet Control Gear

4-channel LED Dimmer (CV, DT6)



Art. Nr. 89453835 (8A)

Art. Nr. 86459560 (10A)

Art. Nr. 89453832 (16A)

Art. Nr. 89453832-HS (16A, dinrail)

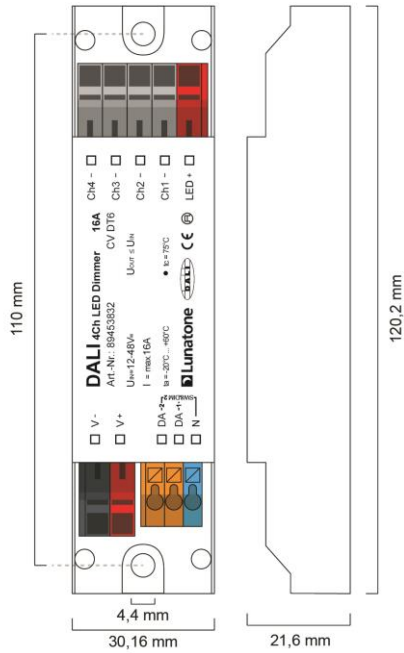
DALI 4Ch LED Dimmer CV Control Gear

Overview

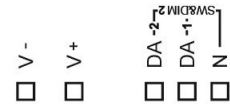
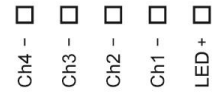
- 4 channel DALI LED-Dimmer
- suitable for constant voltage LED-modules with operating voltages from 12V to 48V
- **Operating Mode DT6:** individual channel control via 4 DALI addresses
- **Operating Mode Colour&Dim:** control by 2 DALI-addresses, one for adjusting the light level and one for adjusting the colour
- **SwitchDim2:** 2 switch-inputs offer control of light level and colour without DALI
- dimming range 0.1%-100%
- adjustable PWM-frequency (122Hz/244Hz/488Hz/976Hz)
- compact types for integration in luminaires, remote ceiling and dinrail mounting
- supply voltage 12V to 48V DC (according to the operating voltage of the led-modules)
- type dependent max. input currents of 8A, 10A or 16A
- the maximum input current can be distributed on the channels at will
- low standby power consumption
- high efficiency
- configuration via PC-software DALI-Cockpit and DALI USB-interface
- user-friendly factory default settings

Specification, Characteristics

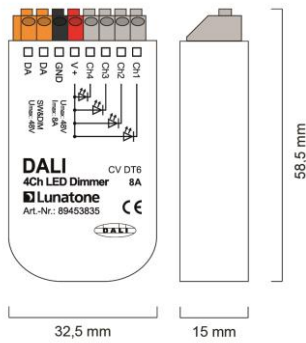
type	DALI 4Ch LED Dimmer			
article number	89453835	86459560	89453832	89453832-HS
electrical data:				
supply voltage	12VDC-48VDC			
maximum input current linmax	8A	10A	16A	16A
control input	DALI	DALI SwitchDim2 (mains voltage)		
current consumption DALI	2mA			
number of DALI-addresses	operating mode DT6: 4 operating mode Colour&Dim: 2			
standby power consumption (12V)	~ 120mW			
technical data:				
power on behaviour	configurable: 0%-100% or last value			
ambient temperature	-20°C to +60°C			
expected lifetime (at Tc<=75°C)	>100000h			
protection class	IP20			
max. connecting wire cross section	1.5 mm ²	2.5 mm ² / DALI&SwD: 1.5 mm ²		2.5 mm ²
dimensions (LxWxH)	59x33x15 mm	120x30x22 mm		98x17x56 mm
housing/mounting	back box	remote ceiling		dinrail



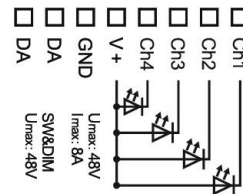
dimensions remote ceiling



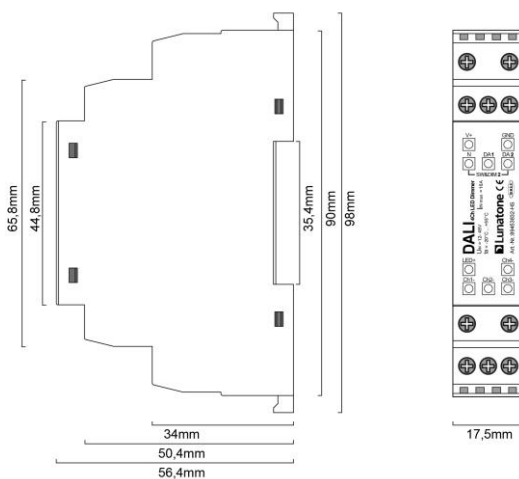
connection plan remote ceiling



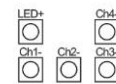
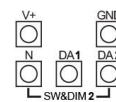
dimensions back box



connection plan back box



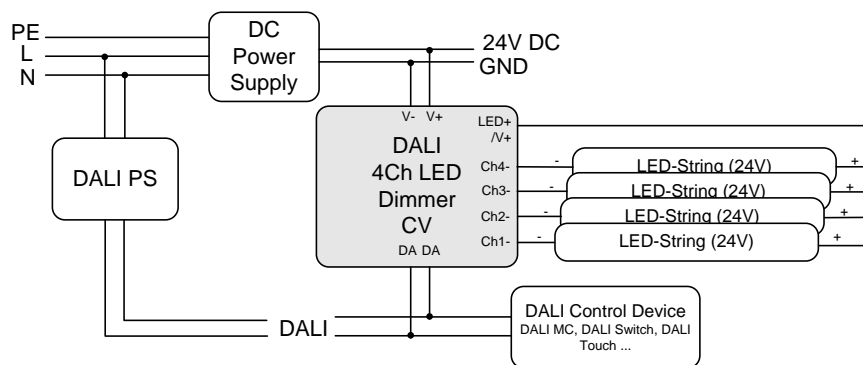
dimensions dinrail



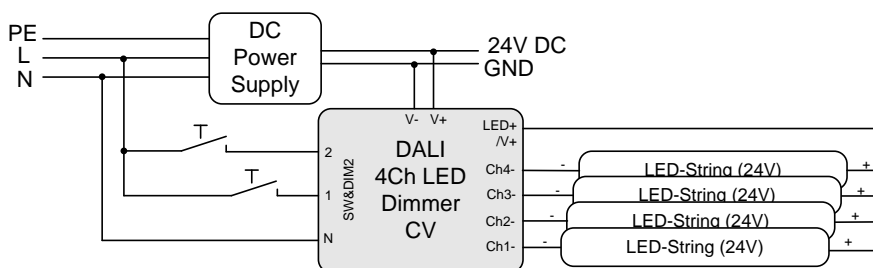
connection plan dinrail

RECOMMENDATION: Care should be taken on keeping cable lengths between DC power supply and dimmer as well as between dimmer and luminaires (Led-Strings) as short as possible. This kind of installation will minimize the influence of voltage drops.

DALI:



SwitchDim2:



Operating Modes

The device offers several operating modes:

DT6 (factory default)

In this operating mode each channel can be controlled by its own DALI address (Device Type 6).

Alternatively the device can be controlled using 2 switch-inputs for mains voltage (SwitchDim2):

SwD1: light level

short press: On/Off

long press: dimming

SwD2: scene selector (short press)

Colour&Dim

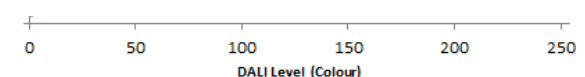
This operating mode is suitable for operating RGB—luminaires. Two DALI-addresses are used, the first to control the light level and the second for changing the distribution on the output channels (e.g. for colour adjustments).

The Colour&Dim mode allows colour adjustments without affecting the light level and vice versa. For each channel only DALI-standard commands like dim up/down but also DAP are used. Thus the device can be used with all common controls and gateways (e.g. KNX). The Colour&Dim mode provides an alternative to the DT8-RGBWAF mode.

Can be operated via DALI or SwitchDim2:

DALI-address 1, SwD1: light level

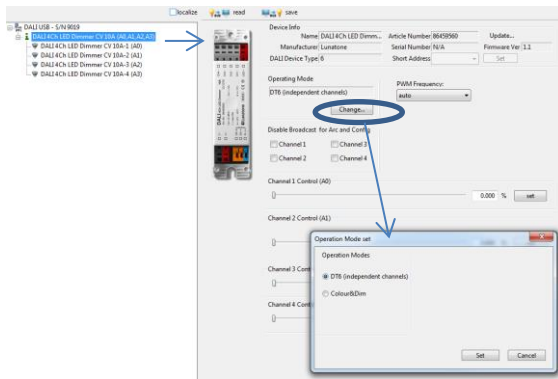
DALI-address 2, SwD2: colour



Selection of operating mode

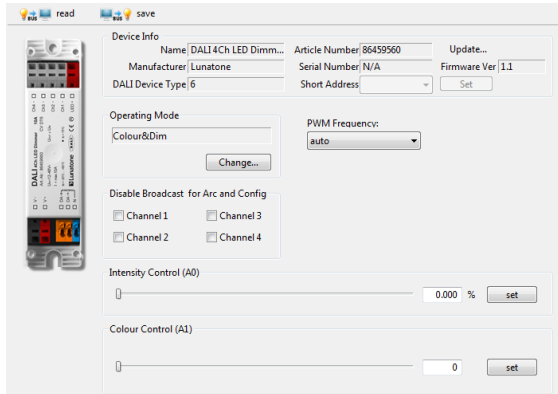
With the help of the PC-software tool DALI-Cockpit the operating mode can be easily set on the general settings page.

Operating mode DT6:



In addition, on the same page the PWM-frequency can be selected and basic control elements for testing each operating modes are available (4 sliders for the level of each channel in operating mode DT6 and slider for level and colour in the operating mode Colour&Dim). Furthermore the broadcast control can be deactivated for each channel individually.

Operating mode Colour&Dim:



Switching between operating modes can also be done with the help of the DALI-command SET OPERATING MODE (IEC 62386-102 Ed.2). When changing the operating mode the number of used DALI-addresses can change as well and this requires a new addressing procedure. In the DALI-Cockpit this address assignment is performed automatically.

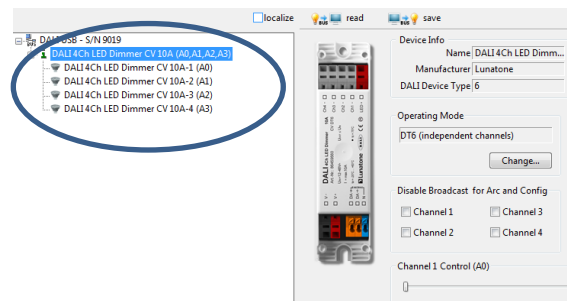
Operating Mode:

Number	Operating Mode
0	DT6 (factory default)
0x90	DT6
0x93	Colour&Dim

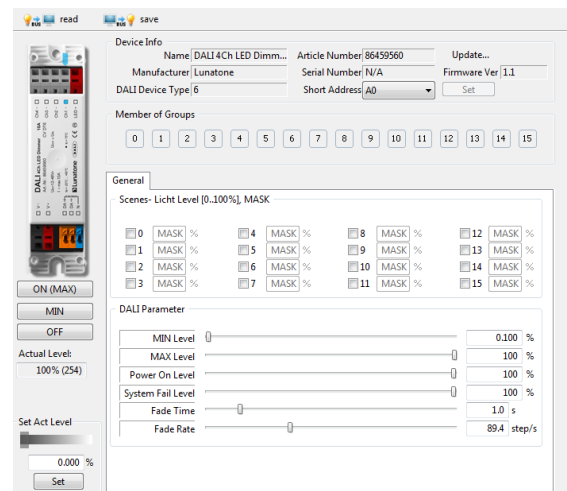
Additional Settings

Besides the settings on the general page each channel can be selected separately in the component tree for individual configuration.

Component Tree:



Settings for each channel (operating mode DT6 and Colour&Dim):



For each address the group membership can be set as well as scene values and DALI-parameters. In Colour&Dim operating mode, all values assigned to channel 2 are representing colours.

Factory Default Settings

Before the initial addressing is performed, the device can already be controlled by group addresses. This predefined grouping will be deleted during the first addressing procedure. Afterwards groups can be assigned as usual (e.g. with the help of the DALI Cockpit). By sending a DALI-Reset command the device is set to DALI default values as defined in the standard.

Summary of the factory default settings (delivery state):

Operating mode	DT6				
SwitchDim2	SwD1: light level SwD2: scene selector				
Min Level	0.1%				
PowerOn Level	MASK (last value)				
Fade Time	2 (1s)				
Fade Rate	5 (89.4 steps/s)				
PWM-frequency	122Hz				
Groups before initial addressing:	G0 – channel1 G1 – channel2 G2 – channel3 G3 – channel4				
predefined scene values:	Scene	Ch1	Ch2	Ch3	Ch4
	0	100%	0%	0%	0%
	1	0%	100%	0%	0%
	2	0%	0%	100%	0%
	3	0%	0%	0%	100%
	4	0%	0%	100%	100%
	5	0%	100%	0%	100%
	6	100%	0%	0%	100%
	7	100%	0%	100%	0%
	8	100%	100%	0%	0%
	9	0%	100%	100%	0%
	10	100%	0%	100%	100%
	11	100%	100%	0%	100%
	12	100%	100%	100%	0%
	13	0%	100%	100%	100%
	14	100%	100%	100%	100%
	15	0%	0%	0%	0%

Purchase Order Information

Art.Nr. 89453835: 4-channel LED Dimmer, CV, max. input current 8A, 12V-48V DC, back box

Art.Nr. 86459560: 4-channel LED Dimmer, CV, max. input current 10A, 12V-48V DC,

SwitchDim2, remote ceiling & integration in luminaires

Art.Nr. 89453832: 4-channel LED Dimmer, CV, max. input current 16A, 12V-48V DC, SwitchDim2, remote ceiling & integration in luminaires

Art.Nr. 89453832-HS: 4-channel LED Dimmer, CV, max. input current 16A, 12V-48V DC, SwitchDim2, din rail mounting

Additional Information

Datasheets and manuals

<https://jumitech/produkter>

DALI-Cockpit – free configuration tool from Lunatone for DALI systems

<http://lunatone.at/en/downloads/Lunatone-DALI-Cockpit.zip>

Contact

Technical Support: support@jumitech.dk

Requests: salg@jumitech.dk

www.jumitech.dk

JUMITECH



Disclaimer

Subject to change. Information provided without guarantee. The datasheet refers to the current delivery.

The compatibility with other devices must be tested in advance to the installation.