

## DALI RGBW LED Dimmer CC

### Datasheet Control Gear



RGBW LED Dimmer (CC, DT8)

common plus connector:

Art. Nr. 86458912-100 (100mA)

Art. Nr. 86458912-250 (250mA)

Art. Nr. 86458912-350 (350mA)

Art. Nr. 86458912-500 (500mA)

Art. Nr. 86458912-700 (700mA)

common minus connector:

Art. Nr. 86458912-350GM (350mA)

Art. Nr. 86458912-500GM (500mA)

Art. Nr. 86458912-700GM (700mA)

# DALI RGBW LED Dimmer CC Control Gear

## Overview

- DALI LED-Dimmer for RGBW colour control
- Suitable for constant current LED-modules
- **Operating Mode DT8:** one DALI-address for the independent control of level and colour (DALI DT8, Type RGBWAF)
- **Operating Mode Colour&Dim:** control by 2 DALI-addresses, one for adjusting the level and one for adjusting the colour
- **SwitchDim2:** 2 switch-inputs offer control of level and colour without DALI
- dimming range 0.1%-100%
- adjustable PWM-frequency (122Hz/244Hz/488Hz/976Hz)
- types for constant currents of 350mA, 500mA and 700mA
- types with common plus and common minus connector available
- suitable for integration in luminaires or remote ceiling
- supply voltage 12V to 48V DC
- output voltage up to 45VDC
- integrated short circuit protection
- low standby power consumption
- high efficiency
- configuration via PC-software DALI-Cockpit and DALI USB-interface
- user-friendly factory default settings

## Specification, Characteristics

### common plus connector:

| type           | DALI RGBW<br>100mA GP | DALI RGBW<br>250mA GP | DALI RGBW<br>350mA GP | DALI RGBW<br>500mA GP | DALI RGBW<br>700mA GP |
|----------------|-----------------------|-----------------------|-----------------------|-----------------------|-----------------------|
| article number | 86458912-100          | 86458912-250          | 86458912-350          | 86458912-500          | 86458912-700          |

### electrical data:

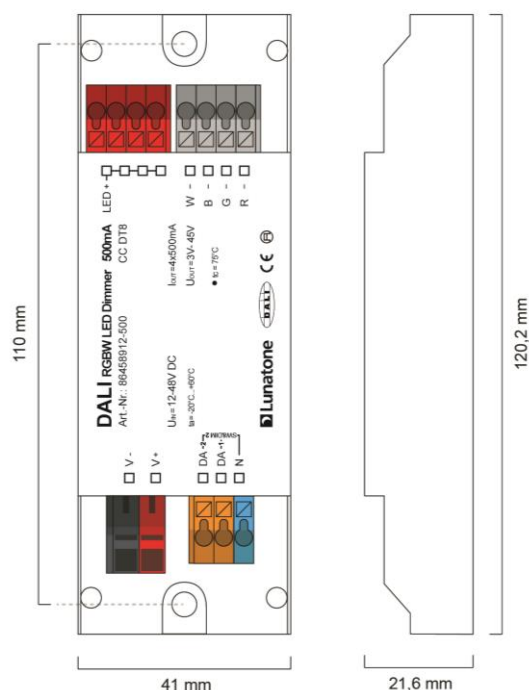
|                                 |   |       |       |       |       |
|---------------------------------|---|-------|-------|-------|-------|
| supply voltage $V_{in}$         | 12VDC-48VDC   |       |       |       |       |
| max. input current $I_{inmax}$  | 100mA   | 250mA | 350mA | 500mA | 700mA |
| max. output current $I_{led}$   | 100mA   | 250mA | 350mA | 500mA | 700mA |
| output voltage range $V_{led}$  | 3V-45V (at 48V supply)                                |       |       |       |       |
| control input                   | DALI<br>SwitchDim2 (mains voltage)                    |       |       |       |       |
| current consumption DALI        | 2mA   |       |       |       |       |
| number of DALI-addresses        | operating mode DT8: 1<br>operating mode Colour&Dim: 2 |       |       |       |       |
| standby power consumption (12V) | ~ 180mW   |       |       |       |       |

### technical data:

|                     |  |
|---------------------|--|
| power on behaviour  | configurable via DALI: 0%-100% or last value |
| ambient temperature | -20°C to +60°C                               |

|                                    |  |
|------------------------------------|--|
| expected lifetime                  | >100000h (at $T_c \leq 75^\circ\text{C}$ )                             |
| protection class                   | IP20   |
| max. connecting wire cross section | up to 1.5 mm <sup>2</sup> , supply (V+, V-): up to 2.5 mm <sup>2</sup> |
| dimensions (LxWxH)                 | 120mmx41mmx22mm  |
| housing/mounting                   | remote ceiling   |

on request: output currents from 100mA to 700mA available



dimensions common plus connector type



connection plan common plus connector type

#### common minus connector:

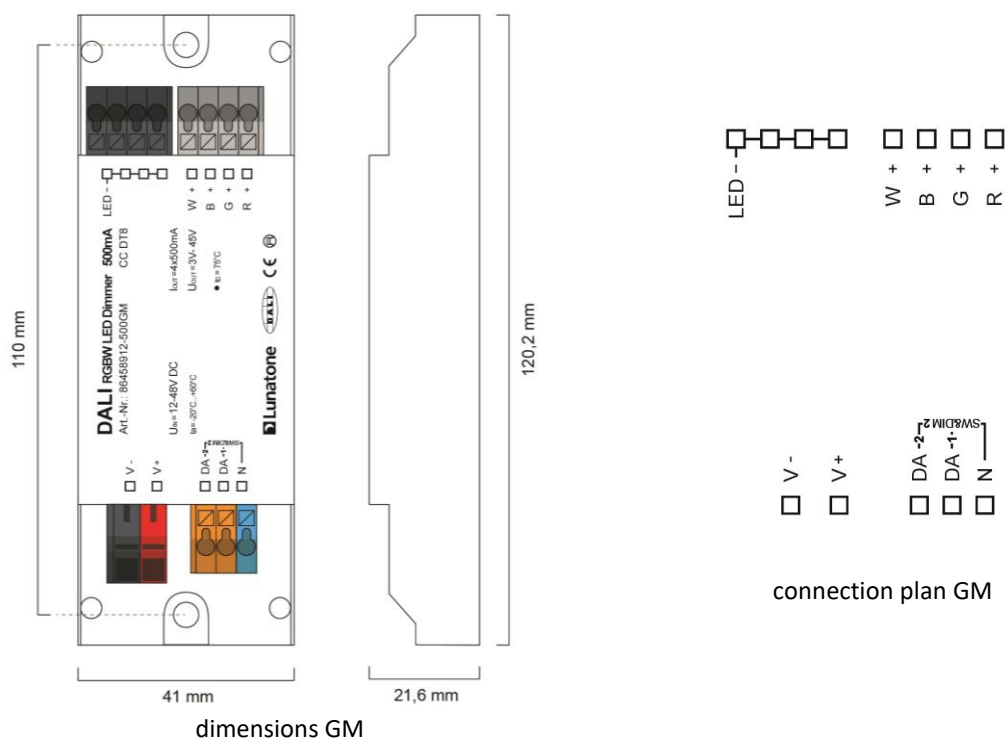
| type           | DALI RGBW 350mA GM | DALI RGBW 500mA GM | DALI RGBW 700mA GM |
|----------------|--------------------|--------------------|--------------------|
| article number | 86458912-350GM     | 86458912-500GM     | 86458912-700GM     |

|                                 |   |       |       |
|---------------------------------|---|-------|-------|
| <b>electrical data</b>          |   |       |       |
| supply voltage $V_{in}$         | 12VDC-48VDC   |       |       |
| max. input current $I_{inmax}$  | 350mA   | 500mA | 700mA |
| max. output current $I_{led}$   | 350mA   | 500mA | 700mA |
| output voltage range $V_{led}$  | 3V-45V (at 48V supply)                                |       |       |
| control input                   | DALI<br>SwitchDim2 (mains voltage)                    |       |       |
| current consumption DALI        | 2mA   |       |       |
| number of DALI-addresses        | operating mode DT8: 1<br>operating mode Colour&Dim: 2 |       |       |
| standby power consumption (12V) | ~ 180mW   |       |       |

|                        |  |
|------------------------|--|
| <b>technical data:</b> |  |
| power on behaviour     | configurable via DALI: 0%-100% or last value |
| ambient temperature    | -20°C to +60°C                               |

|                                    |  |
|------------------------------------|--|
| expected lifetime                  | >100000h (at $T_c \leq 75^\circ\text{C}$ )                           |
| protection class                   | IP20   |
| max. connecting wire cross section | up to $1.5 \text{ mm}^2$ , supply (V+, V-): up to $2.5 \text{ mm}^2$ |
| dimensions (LxWxH)                 | 120mmx41mmx22 mm   |
| housing/mounting                   | remote ceiling   |

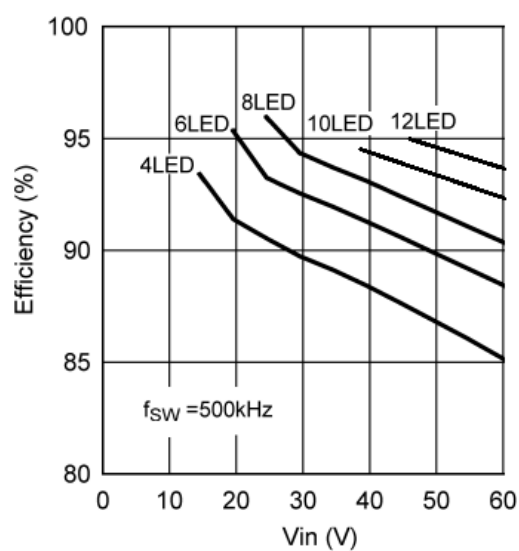
on request: output currents from 100mA to 700mA available



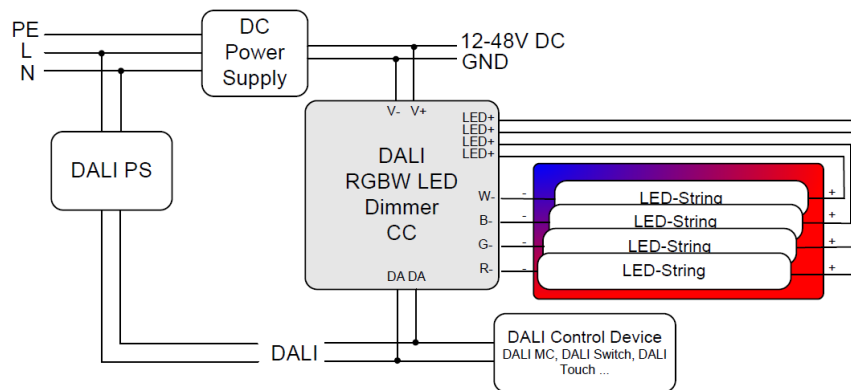
## Hint:

For highest efficiency the input voltage should range between 3V and 10V above the LED-voltage:

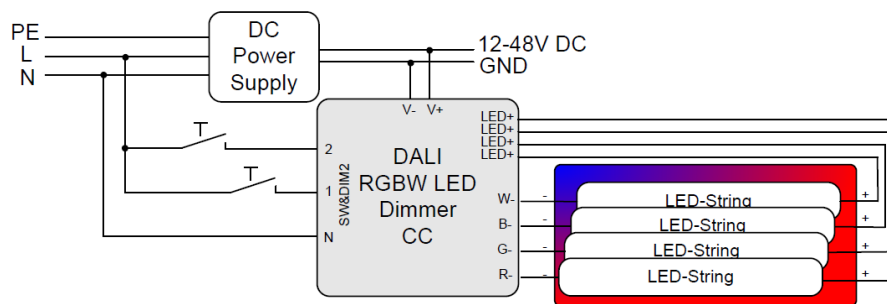
- 4-6 LEDs: 24V
- 6-9 LEDs: 36V
- 10-12 LEDs: 48V



DALI (common plus connector type):



SwitchDim2 (common plus connector type):



## Operating Modes

The device offers several operating modes:

### DT8 (factory default)

In this operating mode one DALI-address for the independent control of light level and colour is used (Device Type 8 RGBWAF).

Alternatively the device can be controlled using 2 switch-inputs for mains voltage (SwitchDim2):

SwD1: light level

short press: On/Off

long press: dimming

SwD2: colour

long press: change colour

### Colour&Dim

This operating mode is suitable for operating RGB—luminaires. Two DALI-addresses are

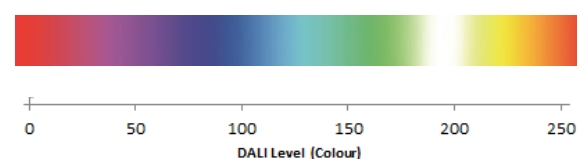
used, the first to control the light level and the second for changing the distribution on the output channels (e.g. for colour adjustments).

The Colour&Dim mode allows colour adjustments without affecting the level and vice versa. For each channel only DALI-standard commands like dim up/down but also DAP are used. Thus the device can be used with all common controls and gateways (e.g. KNX). The Colour&Dim mode provides an alternative to the DT8-RGBWAF mode.

Can be operated via DALI or SwitchDim2:

DALI-address 1, SwD1: light level

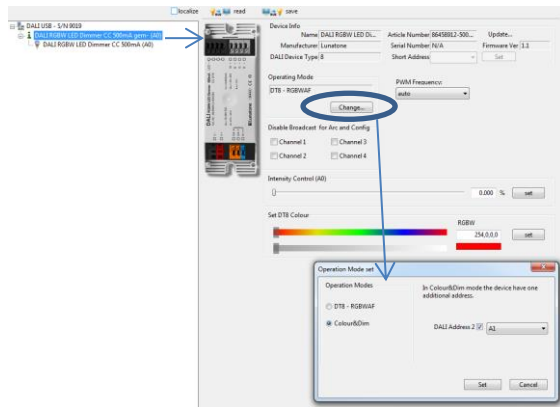
DALI-address 2, SwD2: colour



## Selection of operating mode

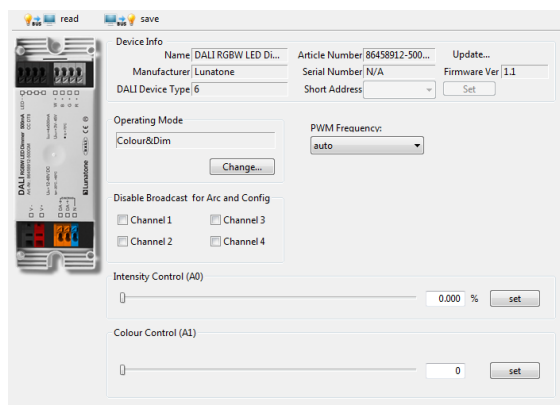
With the help of the PC-software tool DALI-Cockpit the operating mode can be easily set on the general settings page.

Operating mode DT8-RGBWAF:



In addition, on the same page the PWM-frequency can be selected and basic control elements for testing each operating modes are available (slider for level and colour in the operating modes DT8 and Colour&Dim). Furthermore the broadcast control can be deactivated for each channel individually.

Operating mode Colour&Dim:



Switching between operating modes can also be done with the help of the DALI-command SET OPERATING MODE (IEC 62386-102 Ed.2). When changing the operating mode the number of used DALI-addresses can change as well and this requires a new addressing procedure. In the DALI-Cockpit this address assignment is performed automatically.

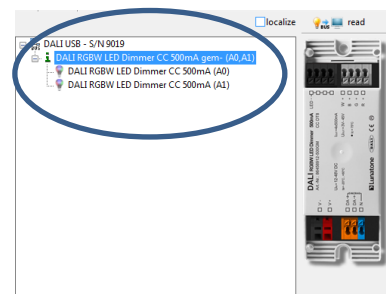
Operating Mode:

| number | operating mode        |
|--------|-----------------------|
| 0x0    | DT8 (factory default) |
| 0x92   | DT8                   |
| 0x93   | Colour&Dim            |

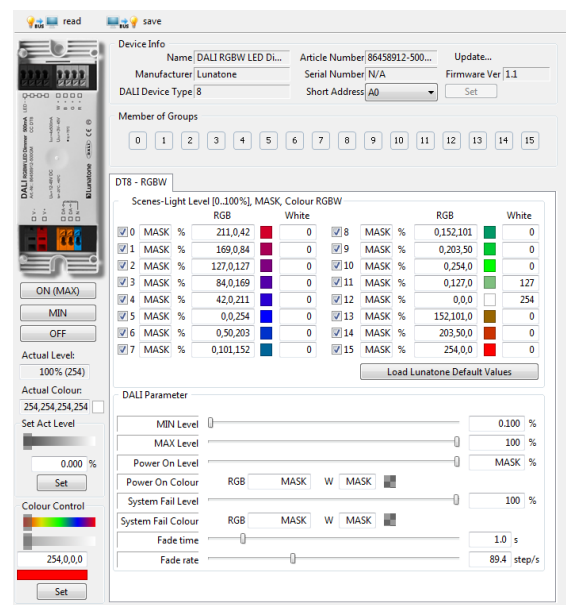
## Additional Settings

Besides the settings on the general page each channel can be selected separately in the component tree for individual configuration.

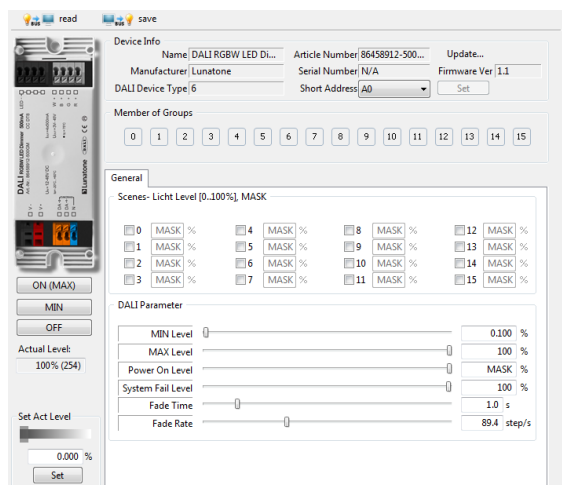
Component Tree:



Settings in the operating mode DT8-RGBWAF (displayed parameters are the factory default values):



Settings for each channel in the operating mode Colour&Dim:



For each address the group membership can be set as well as scene values and DALI-parameters. In Colour&Dim operating mode, all values assigned to channel 2 are representing colours.

## Factory Default Settings

Before the initial addressing is performed, the device can already be controlled by a group address. This predefined grouping will be deleted during the first addressing procedure. Afterwards groups can be assigned as usual (e.g. with the help of the DALI-Cockpit). By sending a DALI-Reset command the device is set to the DALI default values as defined in the standard.

Summary of the factory default settings (delivery state):

|                |                             |
|----------------|-----------------------------|
| Operating mode | DT8                         |
| SwitchDim2     | SwD1: level<br>SwD2: colour |
| Min Level      | 0.1%                        |
| PowerOn Level  | MASK (last value)           |
| Fade Time      | 2 (1s)                      |
| Fade Rate      | 5 (89.4 steps/s)            |
| PWM-frequency  | 122Hz                       |

Groups before initial addressing:

Predefined Scene Values:

G0  
(or G0 and G1 in operating mode Colour&Dim)

|                                     |    |        | RGB       | White |
|-------------------------------------|----|--------|-----------|-------|
| <input checked="" type="checkbox"/> | 0  | MASK % | 211,0,42  | 0     |
| <input checked="" type="checkbox"/> | 1  | MASK % | 169,0,84  | 0     |
| <input checked="" type="checkbox"/> | 2  | MASK % | 127,0,127 | 0     |
| <input checked="" type="checkbox"/> | 3  | MASK % | 84,0,169  | 0     |
| <input checked="" type="checkbox"/> | 4  | MASK % | 42,0,211  | 0     |
| <input checked="" type="checkbox"/> | 5  | MASK % | 0,0,254   | 0     |
| <input checked="" type="checkbox"/> | 6  | MASK % | 0,50,203  | 0     |
| <input checked="" type="checkbox"/> | 7  | MASK % | 0,101,152 | 0     |
| <input checked="" type="checkbox"/> | 8  | MASK % | 0,152,101 | 0     |
| <input checked="" type="checkbox"/> | 9  | MASK % | 0,203,50  | 0     |
| <input checked="" type="checkbox"/> | 10 | MASK % | 0,254,0   | 0     |
| <input checked="" type="checkbox"/> | 11 | MASK % | 0,127,0   | 127   |
| <input checked="" type="checkbox"/> | 12 | MASK % | 0,0,0     | 254   |
| <input checked="" type="checkbox"/> | 13 | MASK % | 152,101,0 | 0     |
| <input checked="" type="checkbox"/> | 14 | MASK % | 203,50,0  | 0     |
| <input checked="" type="checkbox"/> | 15 | MASK % | 254,0,0   | 0     |

## Purchase Order Information

**Art.Nr. 86458912-xxx:** DALI RGBW LED Dimmer, CC – constant current xxx mA (100mA-700mA), **common plus connector**, supply 12V-48V DC, output voltage 3V-45V DC, **SwitchDim2**, remote ceiling & integration in luminaires

**Art.Nr. 86458912-xxxGM:** DALI RGBW LED Dimmer, CC – constant current xxx mA (100mA-700mA), **common minus connector**, supply 12V-48V DC, output voltage 3V-45V DC, **SwitchDim2**, remote ceiling & integration in luminaires

## Additional Information

Datasheets and manuals

<https://jumitech/produkter>

DALI-Cockpit – free configuration tool from  
Lunatone for DALI systems

<http://lunatone.at/en/downloads/Lunatone-DALI-Cockpit.zip>

## Contact

Technical Support: [support@jumitech.dk](mailto:support@jumitech.dk)

Requests: [alg@jumitech.dk](mailto:alg@jumitech.dk)

[www.jumitech.dk](http://www.jumitech.dk)

# JUMiTECH



## Disclaimer

Subject to change. Information provided without guarantee.  
The datasheet refers to the current delivery.

The function in installations with other devices must be tested  
for compatibility in advance.





# DALI RGB LED Dimmer CC Control Gear

## Overview

- DALI LED-Dimmer for RGB colour control
- Suitable for constant current LED-modules
- **Operating Mode DT8:** one DALI-address for the independent control of level and colour (DALI DT8, Type RGBWAF)
- **Operating Mode Colour&Dim:** control by 2 DALI-addresses, one for adjusting the level and one for adjusting the colour
- **SwitchDim2:** 2 switch-inputs offer control of level and colour without DALI
- dimming range 0.1%-100%
- adjustable PWM-frequency (122Hz/244Hz/488Hz/976Hz)
- types for constant currents of 350mA, 500mA and 700mA
- types with common plus and common minus connector available
- suitable for integration in luminaires or remote ceiling
- supply voltage 12V to 48V DC
- output voltage up to 45VDC
- integrated short circuit protection
- low standby power consumption
- high efficiency
- configuration via PC-software DALI-Cockpit and DALI USB-interface
- user-friendly factory default settings

## Specification, Characteristics

### common plus connector:

| type           | DALI RGB 350mA GP | DALI RGB 500mA GP | DALI RGB 700mA GP |
|----------------|-------------------|-------------------|-------------------|
| article number | 86458913-350      | 86458913-500      | 86458913-700      |

### electrical data:

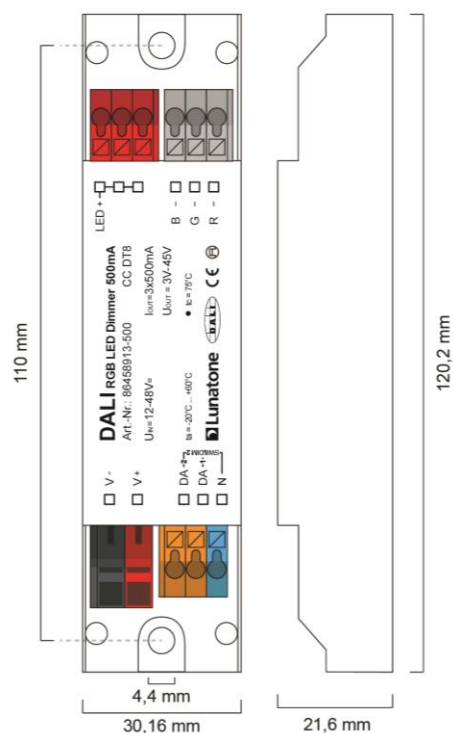
|                                 |   |       |       |
|---------------------------------|---|-------|-------|
| supply voltage $V_{in}$         | 12VDC-48VDC   |       |       |
| max. input current $I_{inmax}$  | 350mA   | 500mA | 700mA |
| max. output current $I_{led}$   | 350mA   | 500mA | 700mA |
| output voltage range $V_{led}$  | 3V-45V (at 48V supply)                                |       |       |
| control input                   | DALI<br>SwitchDim2 (mains voltage)                    |       |       |
| current consumption DALI        | 2mA   |       |       |
| number of DALI-addresses        | operating mode DT8: 1<br>operating mode Colour&Dim: 2 |       |       |
| standby power consumption (12V) | ~ 180mW   |       |       |

### technical data:

|                     |  |
|---------------------|--|
| power on behaviour  | configurable via DALI: 0%-100% or last value |
| ambient temperature | -20°C to +60°C                               |
| expected lifetime   | >100000h (at $T_c \leq 75^\circ\text{C}$ )   |

|                                    |  |
|------------------------------------|--|
| protection class                   | IP20   |
| max. connecting wire cross section | up to 1.5 mm <sup>2</sup> , supply (V+, V-): up to 2.5 mm <sup>2</sup> |
| dimensions (LxWxH)                 | 120mmx30mmx22mm  |
| housing/mounting                   | remote ceiling   |

on request: output currents from 100mA to 700mA available



dimensions common plus connector type



connection plan common plus connector type

#### common minus connector:

| type           | DALI RGB 350mA GM | DALI RGB 500mA GM | DALI RGB 700mA GM |
|----------------|-------------------|-------------------|-------------------|
| article number | 86458913-350GM    | 86458913-500GM    | 86458913-700GM    |

#### electrical data:

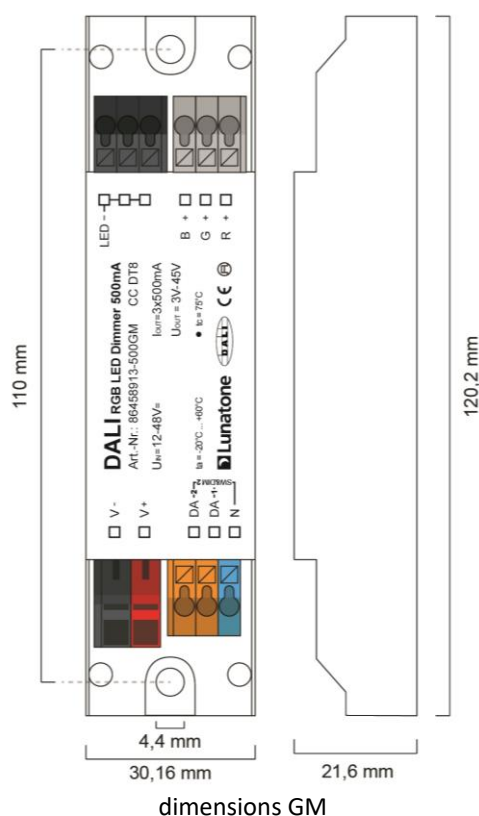
|                                 |   |       |       |
|---------------------------------|---|-------|-------|
| supply voltage $V_{in}$         | 12VDC-48VDC   |       |       |
| max. input current $I_{inmax}$  | 350mA   | 500mA | 700mA |
| max. output current $I_{led}$   | 350mA   | 500mA | 700mA |
| output voltage range $V_{led}$  | 3V-45V (at 48V supply)                                |       |       |
| control input                   | DALI<br>SwitchDim2 (mains voltage)                    |       |       |
| current consumption DALI        | 2mA   |       |       |
| number of DALI-addresses        | operating mode DT8: 1<br>operating mode Colour&Dim: 2 |       |       |
| standby power consumption (12V) | ~ 180mW   |       |       |

#### technical data:

|                     |  |
|---------------------|--|
| power on behaviour  | configurable via DALI: 0%-100% or last value |
| ambient temperature | -20°C to +60°C                               |

|                                    |  |
|------------------------------------|--|
| expected lifetime                  | >100000h (at $T_c \leq 75^\circ\text{C}$ )                             |
| protection class                   | IP20   |
| max. connecting wire cross section | up to 1.5 mm <sup>2</sup> , supply (V+, V-): up to 2.5 mm <sup>2</sup> |
| dimensions (LxWxH)                 | 120mmx30mmx22mm  |
| housing/mounting                   | remote ceiling   |

on request: output currents from 100mA to 700mA available



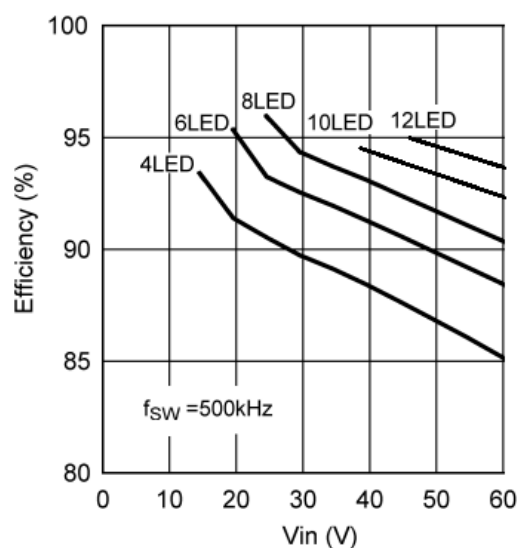
connection plan GM



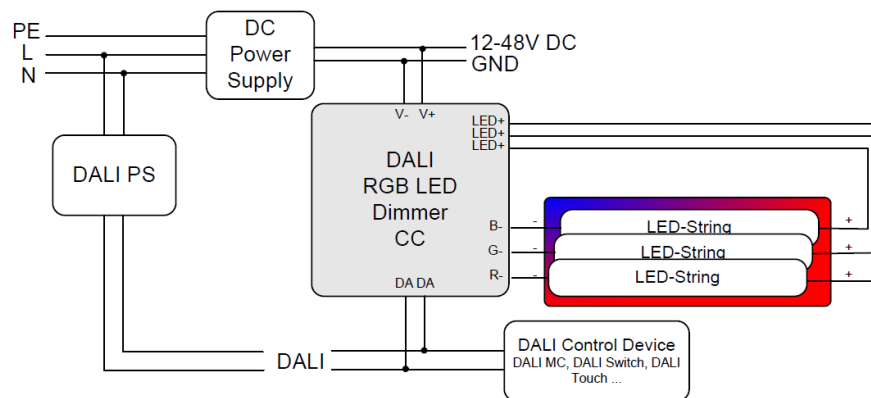
## Hint:

For highest efficiency the input voltage should range between 3V and 10V above the LED-voltage:

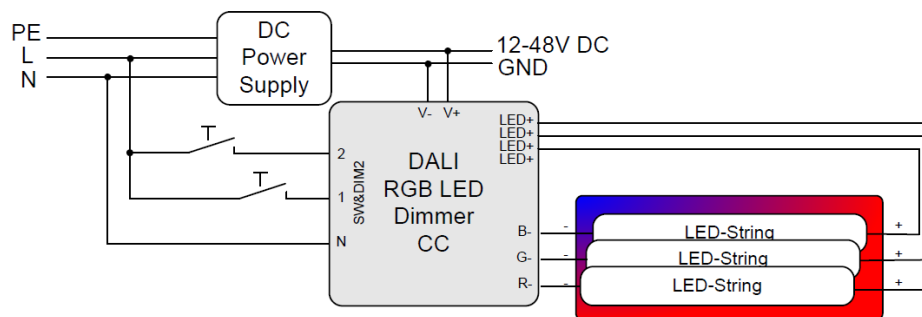
- 4-6 LEDs: 24V
- 6-9 LEDs: 36V
- 10-12 LEDs: 48V



DALI (common plus connector type):



SwitchDim2 (common plus connector type):



## Operating Modes

The device offers several operating modes:

### DT8 (factory default)

In this operating mode one DALI-address for the independent control of light level and colour is used (Device Type 8 RGBWAF).

Alternatively the device can be controlled using 2 switch-inputs for mains voltage (SwitchDim2):

SwD1: light level

short press: On/Off

long press: dimming

SwD2: colour

long press: change colour

### Colour&Dim

This operating mode is suitable for operating RGB—luminaires. Two DALI-addresses are

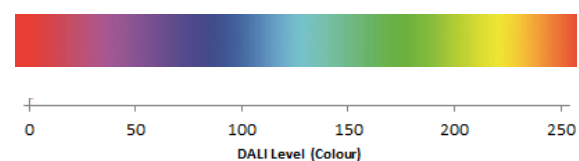
used, the first to control the light level and the second for changing the distribution on the output channels (e.g. for colour adjustments).

The Colour&Dim mode allows colour adjustments without affecting the level and vice versa. For each channel only DALI-standard commands like dim up/down but also DAP are used. Thus the device can be used with all common controls and gateways (e.g. KNX). The Colour&Dim mode provides an alternative to the DT8-RGBWAF mode.

Can be operated via DALI or SwitchDim2:

DALI-address 1, SwD1: light level

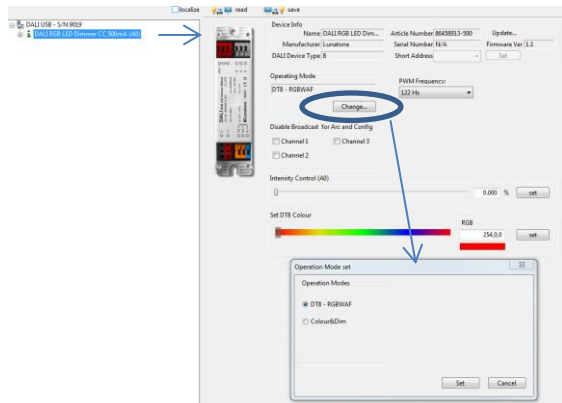
DALI-address 2, SwD2: colour



## Selection of operating mode

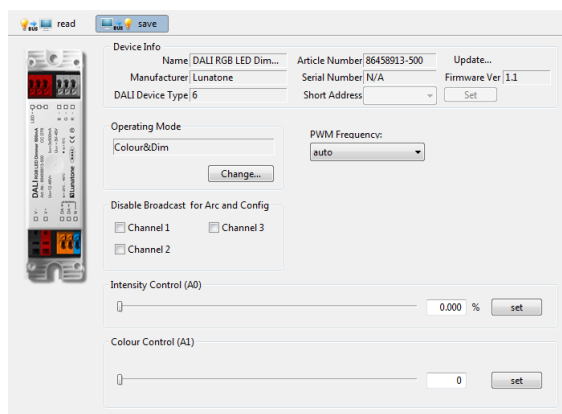
With the help of the PC-software tool DALI-Cockpit the operating mode can be easily set on the general settings page.

Operating mode DT8-RGBWAF:



In addition, on the same page the PWM-frequency can be selected and basic control elements for testing each operating modes are available (slider for level and colour in the operating modes DT8 and Colour&Dim). Furthermore the broadcast control can be deactivated for each channel individually.

Operating mode Colour&Dim:



Switching between operating modes can also be done with the help of the DALI-command SET OPERATING MODE (IEC 62386-102 Ed.2). When changing the operating mode the number of used DALI-addresses can change as well and this requires a new addressing procedure. In the DALI-Cockpit this address assignment is performed automatically.

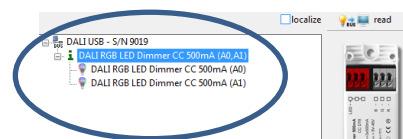
Operating Mode:

| number | operating mode        |
|--------|-----------------------|
| 0x0    | DT8 (factory default) |
| 0x92   | DT8                   |
| 0x93   | Colour&Dim            |

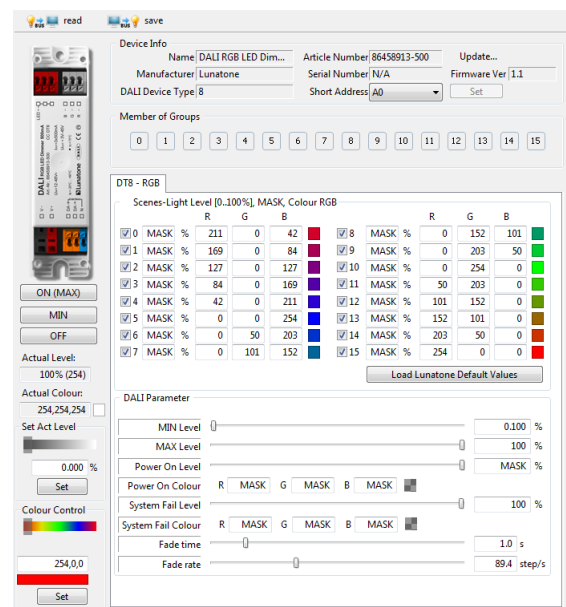
## Additional Settings

Besides the settings on the general page each channel can be selected separately in the component tree for individual configuration.

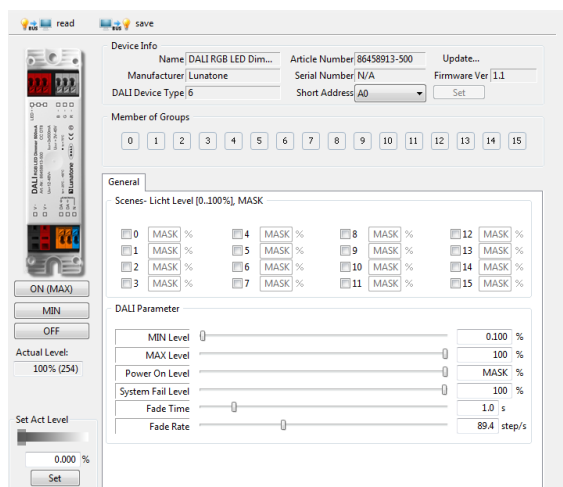
Component Tree:



Settings in the operating mode DT8-RGBWAF (displayed parameters are the factory default values):



Settings for each channel in the operating mode Colour&Dim:



















































For each address the group membership can be set as well as scene values and DALI-parameters. In Colour&Dim operating mode, all values assigned to channel 2 are representing colours.

## Factory Default Settings

Before the initial addressing is performed, the device can already be controlled by a group address. This predefined grouping will be deleted during the first addressing procedure. Afterwards groups can be assigned as usual (e.g. with the help of the DALI-Cockpit). By sending a DALI-Reset command the device is set to the DALI default values as defined in the standard.

Summary of the factory default settings (delivery state):

|                |                             |
|----------------|-----------------------------|
| Operating mode | DT8                         |
| SwitchDim2     | SwD1: level<br>SwD2: colour |
| Min Level      | 0.1%                        |
| PowerOn Level  | MASK (letzter Wert)         |
| Fade Time      | 2 (1s)                      |
| Fade Rate      | 5 (89.4 steps/s)            |
| PWM-           | 122Hz                       |

| frequency                               |  |   |     |     |     |   |   |  |                                       |      |   |     |   |    |   |                                       |      |   |     |   |    |   |                                       |      |   |     |   |     |   |                                       |      |   |    |   |     |   |                                       |      |   |    |   |     |   |                                       |      |   |   |   |     |   |                                       |      |   |   |    |     |   |                                       |      |   |   |     |     |   |                                       |      |   |   |     |     |   |                                       |      |   |   |     |    |   |  |      |   |   |     |   |   |  |      |   |    |     |   |   |  |      |   |     |     |   |   |  |      |   |     |     |   |   |  |      |   |     |    |   |   |  |      |   |     |   |   |   |
|---|--|---|-----|-----|-----|---|---|--|---------------------------------------|------|---|-----|---|----|---|---------------------------------------|------|---|-----|---|----|---|---------------------------------------|------|---|-----|---|-----|---|---------------------------------------|------|---|----|---|-----|---|---------------------------------------|------|---|----|---|-----|---|---------------------------------------|------|---|---|---|-----|---|---------------------------------------|------|---|---|----|-----|---|---------------------------------------|------|---|---|-----|-----|---|---------------------------------------|------|---|---|-----|-----|---|---------------------------------------|------|---|---|-----|----|---|--|------|---|---|-----|---|---|--|------|---|----|-----|---|---|--|------|---|-----|-----|---|---|--|------|---|-----|-----|---|---|--|------|---|-----|----|---|---|--|------|---|-----|---|---|---|
| Groups before<br>initial<br>addressing: | G0<br>(or G0 and G1 in operating<br>mode Colour&Dim)   |   |     |     |     |   |   |  |                                       |      |   |     |   |    |   |                                       |      |   |     |   |    |   |                                       |      |   |     |   |     |   |                                       |      |   |    |   |     |   |                                       |      |   |    |   |     |   |                                       |      |   |   |   |     |   |                                       |      |   |   |    |     |   |                                       |      |   |   |     |     |   |                                       |      |   |   |     |     |   |                                       |      |   |   |     |    |   |  |      |   |   |     |   |   |  |      |   |    |     |   |   |  |      |   |     |     |   |   |  |      |   |     |     |   |   |  |      |   |     |    |   |   |  |      |   |     |   |   |   |
| Predefined<br>Scene Values:             | <table><tr><th></th><th></th><th></th><th>R</th><th>G</th><th>B</th><th></th></tr><tr><td><input checked="" type="checkbox"/> 0</td><td>MASK</td><td>%</td><td>211</td><td>0</td><td>42</td><td></td></tr><tr><td><input checked="" type="checkbox"/> 1</td><td>MASK</td><td>%</td><td>169</td><td>0</td><td>84</td><td></td></tr><tr><td><input checked="" type="checkbox"/> 2</td><td>MASK</td><td>%</td><td>127</td><td>0</td><td>127</td><td></td></tr><tr><td><input checked="" type="checkbox"/> 3</td><td>MASK</td><td>%</td><td>84</td><td>0</td><td>169</td><td></td></tr><tr><td><input checked="" type="checkbox"/> 4</td><td>MASK</td><td>%</td><td>42</td><td>0</td><td>211</td><td></td></tr><tr><td><input checked="" type="checkbox"/> 5</td><td>MASK</td><td>%</td><td>0</td><td>0</td><td>254</td><td></td></tr><tr><td><input checked="" type="checkbox"/> 6</td><td>MASK</td><td>%</td><td>0</td><td>50</td><td>203</td><td></td></tr><tr><td><input checked="" type="checkbox"/> 7</td><td>MASK</td><td>%</td><td>0</td><td>101</td><td>152</td><td></td></tr><tr><td><input checked="" type="checkbox"/> 8</td><td>MASK</td><td>%</td><td>0</td><td>152</td><td>101</td><td></td></tr><tr><td><input checked="" type="checkbox"/> 9</td><td>MASK</td><td>%</td><td>0</td><td>203</td><td>50</td><td></td></tr><tr><td><input checked="" type="checkbox"/> 10</td><td>MASK</td><td>%</td><td>0</td><td>254</td><td>0</td><td></td></tr><tr><td><input checked="" type="checkbox"/> 11</td><td>MASK</td><td>%</td><td>50</td><td>203</td><td>0</td><td></td></tr><tr><td><input checked="" type="checkbox"/> 12</td><td>MASK</td><td>%</td><td>101</td><td>152</td><td>0</td><td></td></tr><tr><td><input checked="" type="checkbox"/> 13</td><td>MASK</td><td>%</td><td>152</td><td>101</td><td>0</td><td></td></tr><tr><td><input checked="" type="checkbox"/> 14</td><td>MASK</td><td>%</td><td>203</td><td>50</td><td>0</td><td></td></tr><tr><td><input checked="" type="checkbox"/> 15</td><td>MASK</td><td>%</td><td>254</td><td>0</td><td>0</td><td></td></tr></table> |   |     |     | R   | G   | B |  | <input checked="" type="checkbox"/> 0 | MASK | % | 211 | 0 | 42 |  | <input checked="" type="checkbox"/> 1 | MASK | % | 169 | 0 | 84 |  | <input checked="" type="checkbox"/> 2 | MASK | % | 127 | 0 | 127 |  | <input checked="" type="checkbox"/> 3 | MASK | % | 84 | 0 | 169 |  | <input checked="" type="checkbox"/> 4 | MASK | % | 42 | 0 | 211 |  | <input checked="" type="checkbox"/> 5 | MASK | % | 0 | 0 | 254 |  | <input checked="" type="checkbox"/> 6 | MASK | % | 0 | 50 | 203 |  | <input checked="" type="checkbox"/> 7 | MASK | % | 0 | 101 | 152 |  | <input checked="" type="checkbox"/> 8 | MASK | % | 0 | 152 | 101 |  | <input checked="" type="checkbox"/> 9 | MASK | % | 0 | 203 | 50 |  | <input checked="" type="checkbox"/> 10 | MASK | % | 0 | 254 | 0 |  | <input checked="" type="checkbox"/> 11 | MASK | % | 50 | 203 | 0 |  | <input checked="" type="checkbox"/> 12 | MASK | % | 101 | 152 | 0 |  | <input checked="" type="checkbox"/> 13 | MASK | % | 152 | 101 | 0 |  | <input checked="" type="checkbox"/> 14 | MASK | % | 203 | 50 | 0 |  | <input checked="" type="checkbox"/> 15 | MASK | % | 254 | 0 | 0 |  |
|   |  |   | R   | G   | B   |   |   |  |                                       |      |   |     |   |    |   |                                       |      |   |     |   |    |   |                                       |      |   |     |   |     |   |                                       |      |   |    |   |     |   |                                       |      |   |    |   |     |   |                                       |      |   |   |   |     |   |                                       |      |   |   |    |     |   |                                       |      |   |   |     |     |   |                                       |      |   |   |     |     |   |                                       |      |   |   |     |    |   |  |      |   |   |     |   |   |  |      |   |    |     |   |   |  |      |   |     |     |   |   |  |      |   |     |     |   |   |  |      |   |     |    |   |   |  |      |   |     |   |   |   |
| <input checked="" type="checkbox"/> 0   | MASK   | % | 211 | 0   | 42  |  |   |  |                                       |      |   |     |   |    |   |                                       |      |   |     |   |    |   |                                       |      |   |     |   |     |   |                                       |      |   |    |   |     |   |                                       |      |   |    |   |     |   |                                       |      |   |   |   |     |   |                                       |      |   |   |    |     |   |                                       |      |   |   |     |     |   |                                       |      |   |   |     |     |   |                                       |      |   |   |     |    |   |  |      |   |   |     |   |   |  |      |   |    |     |   |   |  |      |   |     |     |   |   |  |      |   |     |     |   |   |  |      |   |     |    |   |   |  |      |   |     |   |   |   |
| <input checked="" type="checkbox"/> 1   | MASK   | % | 169 | 0   | 84  |  |   |  |                                       |      |   |     |   |    |   |                                       |      |   |     |   |    |   |                                       |      |   |     |   |     |   |                                       |      |   |    |   |     |   |                                       |      |   |    |   |     |   |                                       |      |   |   |   |     |   |                                       |      |   |   |    |     |   |                                       |      |   |   |     |     |   |                                       |      |   |   |     |     |   |                                       |      |   |   |     |    |   |  |      |   |   |     |   |   |  |      |   |    |     |   |   |  |      |   |     |     |   |   |  |      |   |     |     |   |   |  |      |   |     |    |   |   |  |      |   |     |   |   |   |
| <input checked="" type="checkbox"/> 2   | MASK   | % | 127 | 0   | 127 |  |   |  |                                       |      |   |     |   |    |   |                                       |      |   |     |   |    |   |                                       |      |   |     |   |     |   |                                       |      |   |    |   |     |   |                                       |      |   |    |   |     |   |                                       |      |   |   |   |     |   |                                       |      |   |   |    |     |   |                                       |      |   |   |     |     |   |                                       |      |   |   |     |     |   |                                       |      |   |   |     |    |   |  |      |   |   |     |   |   |  |      |   |    |     |   |   |  |      |   |     |     |   |   |  |      |   |     |     |   |   |  |      |   |     |    |   |   |  |      |   |     |   |   |   |
| <input checked="" type="checkbox"/> 3   | MASK   | % | 84  | 0   | 169 |  |   |  |                                       |      |   |     |   |    |   |                                       |      |   |     |   |    |   |                                       |      |   |     |   |     |   |                                       |      |   |    |   |     |   |                                       |      |   |    |   |     |   |                                       |      |   |   |   |     |   |                                       |      |   |   |    |     |   |                                       |      |   |   |     |     |   |                                       |      |   |   |     |     |   |                                       |      |   |   |     |    |   |  |      |   |   |     |   |   |  |      |   |    |     |   |   |  |      |   |     |     |   |   |  |      |   |     |     |   |   |  |      |   |     |    |   |   |  |      |   |     |   |   |   |
| <input checked="" type="checkbox"/> 4   | MASK   | % | 42  | 0   | 211 |  |   |  |                                       |      |   |     |   |    |   |                                       |      |   |     |   |    |   |                                       |      |   |     |   |     |   |                                       |      |   |    |   |     |   |                                       |      |   |    |   |     |   |                                       |      |   |   |   |     |   |                                       |      |   |   |    |     |   |                                       |      |   |   |     |     |   |                                       |      |   |   |     |     |   |                                       |      |   |   |     |    |   |  |      |   |   |     |   |   |  |      |   |    |     |   |   |  |      |   |     |     |   |   |  |      |   |     |     |   |   |  |      |   |     |    |   |   |  |      |   |     |   |   |   |
| <input checked="" type="checkbox"/> 5   | MASK   | % | 0   | 0   | 254 |  |   |  |                                       |      |   |     |   |    |   |                                       |      |   |     |   |    |   |                                       |      |   |     |   |     |   |                                       |      |   |    |   |     |   |                                       |      |   |    |   |     |   |                                       |      |   |   |   |     |   |                                       |      |   |   |    |     |   |                                       |      |   |   |     |     |   |                                       |      |   |   |     |     |   |                                       |      |   |   |     |    |   |  |      |   |   |     |   |   |  |      |   |    |     |   |   |  |      |   |     |     |   |   |  |      |   |     |     |   |   |  |      |   |     |    |   |   |  |      |   |     |   |   |   |
| <input checked="" type="checkbox"/> 6   | MASK   | % | 0   | 50  | 203 |  |   |  |                                       |      |   |     |   |    |   |                                       |      |   |     |   |    |   |                                       |      |   |     |   |     |   |                                       |      |   |    |   |     |   |                                       |      |   |    |   |     |   |                                       |      |   |   |   |     |   |                                       |      |   |   |    |     |   |                                       |      |   |   |     |     |   |                                       |      |   |   |     |     |   |                                       |      |   |   |     |    |   |  |      |   |   |     |   |   |  |      |   |    |     |   |   |  |      |   |     |     |   |   |  |      |   |     |     |   |   |  |      |   |     |    |   |   |  |      |   |     |   |   |   |
| <input checked="" type="checkbox"/> 7   | MASK   | % | 0   | 101 | 152 |  |   |  |                                       |      |   |     |   |    |   |                                       |      |   |     |   |    |   |                                       |      |   |     |   |     |   |                                       |      |   |    |   |     |   |                                       |      |   |    |   |     |   |                                       |      |   |   |   |     |   |                                       |      |   |   |    |     |   |                                       |      |   |   |     |     |   |                                       |      |   |   |     |     |   |                                       |      |   |   |     |    |   |  |      |   |   |     |   |   |  |      |   |    |     |   |   |  |      |   |     |     |   |   |  |      |   |     |     |   |   |  |      |   |     |    |   |   |  |      |   |     |   |   |   |
| <input checked="" type="checkbox"/> 8   | MASK   | % | 0   | 152 | 101 |  |   |  |                                       |      |   |     |   |    |   |                                       |      |   |     |   |    |   |                                       |      |   |     |   |     |   |                                       |      |   |    |   |     |   |                                       |      |   |    |   |     |   |                                       |      |   |   |   |     |   |                                       |      |   |   |    |     |   |                                       |      |   |   |     |     |   |                                       |      |   |   |     |     |   |                                       |      |   |   |     |    |   |  |      |   |   |     |   |   |  |      |   |    |     |   |   |  |      |   |     |     |   |   |  |      |   |     |     |   |   |  |      |   |     |    |   |   |  |      |   |     |   |   |   |
| <input checked="" type="checkbox"/> 9   | MASK   | % | 0   | 203 | 50  |  |   |  |                                       |      |   |     |   |    |   |                                       |      |   |     |   |    |   |                                       |      |   |     |   |     |   |                                       |      |   |    |   |     |   |                                       |      |   |    |   |     |   |                                       |      |   |   |   |     |   |                                       |      |   |   |    |     |   |                                       |      |   |   |     |     |   |                                       |      |   |   |     |     |   |                                       |      |   |   |     |    |   |  |      |   |   |     |   |   |  |      |   |    |     |   |   |  |      |   |     |     |   |   |  |      |   |     |     |   |   |  |      |   |     |    |   |   |  |      |   |     |   |   |   |
| <input checked="" type="checkbox"/> 10  | MASK   | % | 0   | 254 | 0   |  |   |  |                                       |      |   |     |   |    |   |                                       |      |   |     |   |    |   |                                       |      |   |     |   |     |   |                                       |      |   |    |   |     |   |                                       |      |   |    |   |     |   |                                       |      |   |   |   |     |   |                                       |      |   |   |    |     |   |                                       |      |   |   |     |     |   |                                       |      |   |   |     |     |   |                                       |      |   |   |     |    |   |  |      |   |   |     |   |   |  |      |   |    |     |   |   |  |      |   |     |     |   |   |  |      |   |     |     |   |   |  |      |   |     |    |   |   |  |      |   |     |   |   |   |
| <input checked="" type="checkbox"/> 11  | MASK   | % | 50  | 203 | 0   |  |   |  |                                       |      |   |     |   |    |   |                                       |      |   |     |   |    |   |                                       |      |   |     |   |     |   |                                       |      |   |    |   |     |   |                                       |      |   |    |   |     |   |                                       |      |   |   |   |     |   |                                       |      |   |   |    |     |   |                                       |      |   |   |     |     |   |                                       |      |   |   |     |     |   |                                       |      |   |   |     |    |   |  |      |   |   |     |   |   |  |      |   |    |     |   |   |  |      |   |     |     |   |   |  |      |   |     |     |   |   |  |      |   |     |    |   |   |  |      |   |     |   |   |   |
| <input checked="" type="checkbox"/> 12  | MASK   | % | 101 | 152 | 0   |  |   |  |                                       |      |   |     |   |    |   |                                       |      |   |     |   |    |   |                                       |      |   |     |   |     |   |                                       |      |   |    |   |     |   |                                       |      |   |    |   |     |   |                                       |      |   |   |   |     |   |                                       |      |   |   |    |     |   |                                       |      |   |   |     |     |   |                                       |      |   |   |     |     |   |                                       |      |   |   |     |    |   |  |      |   |   |     |   |   |  |      |   |    |     |   |   |  |      |   |     |     |   |   |  |      |   |     |     |   |   |  |      |   |     |    |   |   |  |      |   |     |   |   |   |
| <input checked="" type="checkbox"/> 13  | MASK   | % | 152 | 101 | 0   |  |   |  |                                       |      |   |     |   |    |   |                                       |      |   |     |   |    |   |                                       |      |   |     |   |     |   |                                       |      |   |    |   |     |   |                                       |      |   |    |   |     |   |                                       |      |   |   |   |     |   |                                       |      |   |   |    |     |   |                                       |      |   |   |     |     |   |                                       |      |   |   |     |     |   |                                       |      |   |   |     |    |   |  |      |   |   |     |   |   |  |      |   |    |     |   |   |  |      |   |     |     |   |   |  |      |   |     |     |   |   |  |      |   |     |    |   |   |  |      |   |     |   |   |   |
| <input checked="" type="checkbox"/> 14  | MASK   | % | 203 | 50  | 0   |  |   |  |                                       |      |   |     |   |    |   |                                       |      |   |     |   |    |   |                                       |      |   |     |   |     |   |                                       |      |   |    |   |     |   |                                       |      |   |    |   |     |   |                                       |      |   |   |   |     |   |                                       |      |   |   |    |     |   |                                       |      |   |   |     |     |   |                                       |      |   |   |     |     |   |                                       |      |   |   |     |    |   |  |      |   |   |     |   |   |  |      |   |    |     |   |   |  |      |   |     |     |   |   |  |      |   |     |     |   |   |  |      |   |     |    |   |   |  |      |   |     |   |   |   |
| <input checked="" type="checkbox"/> 15  | MASK   | % | 254 | 0   | 0   |  |   |  |                                       |      |   |     |   |    |   |                                       |      |   |     |   |    |   |                                       |      |   |     |   |     |   |                                       |      |   |    |   |     |   |                                       |      |   |    |   |     |   |                                       |      |   |   |   |     |   |                                       |      |   |   |    |     |   |                                       |      |   |   |     |     |   |                                       |      |   |   |     |     |   |                                       |      |   |   |     |    |   |  |      |   |   |     |   |   |  |      |   |    |     |   |   |  |      |   |     |     |   |   |  |      |   |     |     |   |   |  |      |   |     |    |   |   |  |      |   |     |   |   |   |

## Purchase Order Information

**Art.Nr. 86458913-xxx:** DALI RGB LED Dimmer, CC constant current xxx mA (100mA-700mA), **common plus connector**, supply 12V-48V DC, output voltage 3V-45V DC, **SwitchDim2**, remote ceiling & integration in luminaires

**Art.Nr. 86458913-xxxGM:** DALI RGB LED Dimmer, CC – constant current xxx mA (100mA-700mA), **common minus connector**, supply 12V-48V DC, output voltage 3V-45V DC, **SwitchDim2**, remote ceiling & integration in luminaires

## Additional Information

Datasheets and manuals

<https://jumitech/produkter>

DALI-Cockpit – free configuration tool from  
Lunatone for DALI systems

<http://lunatone.at/en/downloads/Lunatone-DALI-Cockpit.zip>

## Contact

Technical Support: [support@jumitech.dk](mailto:support@jumitech.dk)

Requests: [alg@jumitech.dk](mailto:alg@jumitech.dk)

[www.jumitech.dk](http://www.jumitech.dk)

# JUMiTECH



## Disclaimer

Subject to change. Information provided without guarantee.  
The datasheet refers to the current delivery.

The function in installations with other devices must be tested  
for compatibility in advance.



## DALI CW-WW LED Dimmer CC

### Datasheet

#### Control Gear



DALI LED Dimmer (CC, DT8) for  
the control of tunable white  
luminaires (CW-WW)

common plus connector:

- Art. Nr. 86458911-350 (350mA)
- Art.Nr. 86458911-350DE (350mA)
- Art. Nr. 86458911-500 (500mA)
- Art. Nr. 86458911-500DE (500mA)
- Art. Nr. 86458911-700 (700mA)
- Art. Nr. 86458911-1000 (1000mA)

common minus connector:

- Art.Nr. 86458911-350GMDE (350mA)
- Art.Nr. 86458911-500GMDE (500mA)
- Art. Nr. 86458911-700GM (700mA)
- Art. Nr. 86458911-1000GM (1000mA)

# DALI CW-WW LED-Dimmer CC Control Gear

## Overview

- DALI LED-Dimmer for the control of tunable white luminaires
- suitable for constant current LED-modules
- **Operating Mode DT8:** one DALI-address for the independent control of light level and colour temperature (DALI DT8, Colour Type Tc)
- **Operating Mode Balance&Dim:** control by 2 DALI-addresses, one for adjusting the light level and one for adjusting the channel balance (e.g. colour temperature)
- **Operating Mode Dim2Warm:** one DALI-address for simultaneous adjustment of light level and colour temperature
- **SwitchDim2:** 2 switch-inputs offer control of level and colour without DALI
- dimming range 0.1%-100%
- adjustable PWM-frequency (122Hz/244Hz/488Hz/976Hz)
- types for constant currents of 350mA, 500mA, 700mA and 1000mA
- types with common plus and common minus connector available
- compact types for integration in luminaires or remote ceiling
- supply voltage from 12V to 48V DC
- output voltage up to 45VDC
- integrated short circuit protection
- low standby power consumption
- high efficiency
- configuration via PC-software DALI-Cockpit and DALI USB-interface
- user-friendly factory default settings

## Specification, Characteristics

### common plus connector:

| type           | DALI CW-WW<br>350/500mA        | DALI CW-WW<br>350/500mA DE | DALI CW-WW<br>700mA | DALI CW-WW<br>1000mA |
|----------------|--------------------------------|----------------------------|---------------------|----------------------|
| article number | 86458911-350 /<br>86458911-500 | 86458911-<br>350DE/500DE   | 86458911-700        | 86458911-1000        |

### electrical data:

|                                 |  |                    |       |        |
|---------------------------------|--|--------------------|-------|--------|
| Electrical data:                |  |                    |       |        |
| supply voltage $V_{in}$         | 12VDC-48VDC  |                    |       |        |
| max. input current $I_{inmax}$  | 350mA / 500mA  | 350mA / 500mA      | 700mA | 1000mA |
| max. output current $I_{led}$   | 350mA / 500mA  | 350mA / 500mA      | 700mA | 1000mA |
| output voltage range $V_{led}$  | 3V-45V (at 48V supply)   |                    |       |        |
| control input                   | DALI   | DALI<br>SwitchDim2 |       |        |
| current consumption DALI        | 2mA  |                    |       |        |
| number of DALI-addresses        | operating mode DT8, Dim2Warm: 1<br>operating mode Balance&Dim: 2 |                    |       |        |
| standby power consumption (12V) | ~ 180 mW   |                    |       |        |

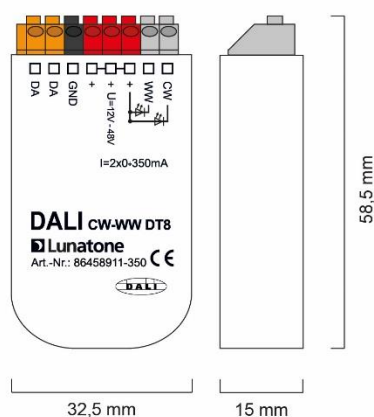
| type | DALI CW-WW<br>350/500mA | DALI CW-WW<br>350/500mA DE | DALI CW-WW<br>700mA | DALI CW-WW<br>1000mA |
|------|-------------------------|----------------------------|---------------------|----------------------|
|------|-------------------------|----------------------------|---------------------|----------------------|

## technical data:

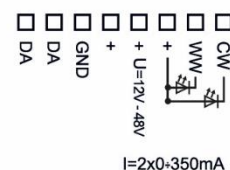
|  |  |   |                     |
|--|--|---|---------------------|
| power on behaviour                     | configurable via DALI: 0%-100% or last value |   |                     |
| storage and transportation temperature | -20°C to +75°C                               |   |                     |
| operational ambient temperature        | -20°C to +60°C                               |   |                     |
| expected lifetime                      | >100000h at Tc<75°C                          |   |                     |
| protection class                       | IP20   |   |                     |
| max. connecting wire cross section     | up to 1.5 mm <sup>2</sup>                    | up to 1.5 mm <sup>2</sup> ,<br>supply (V+, V-): up to 2.5 mm <sup>2</sup> |                     |
| dimensions (LxWxH)                     | 59mm x 33mm<br>x 15mm                        | 120mm x 30mm<br>x 22mm  | 120mm x 41mm x 22mm |
| housing/mounting                       | back box                                     | remote ceiling  |                     |

on request: output currents from 100mA to 1000mA available

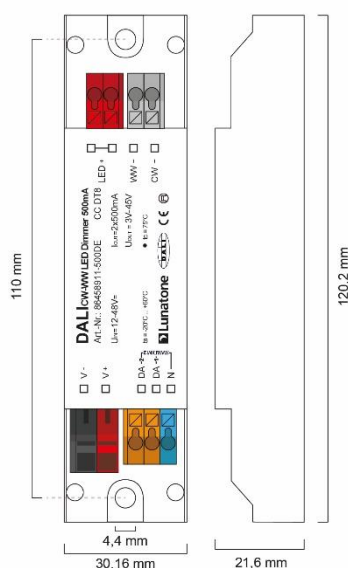
for constant currents up to 500mA:



dimensions (common plus, back box)



connection plan (common plus, back box)

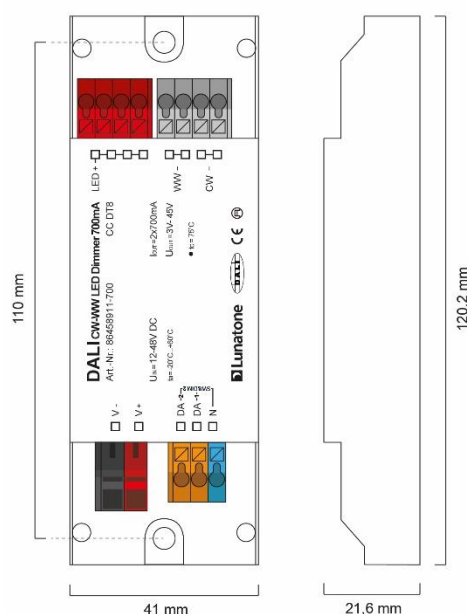


dimensions (common plus, remote ceiling)



connection plan (common plus, remote ceiling)

for constant currents >500mA



dimensions (common plus, remote ceiling)



connection plan (common plus, remote ceiling)

#### common minus connector:

| type           | DALI CW-WW<br>350/500mA GMDE | DALI CW-WW<br>700mA GM | DALI CW-WW<br>1000mA GM |
|----------------|------------------------------|------------------------|-------------------------|
| article number | 86458911-<br>350GMDE/500GMDE | 86458911-700GM         | 86458911-1000GM         |

#### electrical data:

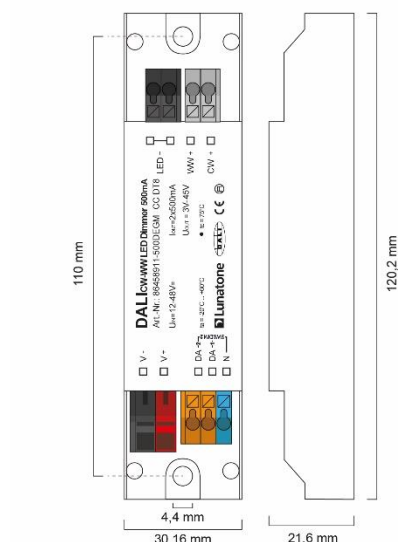
|                                 |  |       |        |
|---------------------------------|--|-------|--------|
| supply voltage $V_{in}$         | 12VDC-48VDC  |       |        |
| max. input current $I_{inmax}$  | 350/500mA  | 700mA | 1000mA |
| max. output current $I_{led}$   | 350/500mA  | 700mA | 1000mA |
| output voltage range $V_{led}$  | 3V-45V (at 48V supply)   |       |        |
| control input                   | DALI<br>SwitchDim2   |       |        |
| current consumption DALI        | 2mA  |       |        |
| number of DALI-addresses        | operating mode DT8, Dim2Warm: 1<br>operating mode Balance&Dim: 2 |       |        |
| standby power consumption (12V) | 180 mW   |       |        |

#### technical data:

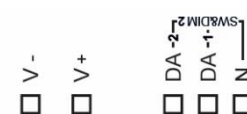
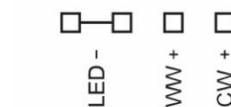
|                                    |  |                 |
|------------------------------------|--|-----------------|
| technical data:                    |  |                 |
| power on behaviour                 | configurable via DALI: 0%-100% or last value     |                 |
| storage and transportation temp.   | -20°C bis +75°C                                  |                 |
| operational ambient temperature    | -20°C bis +60°C                                  |                 |
| expected lifetime                  | >100000h (at Tc<75°C)                            |                 |
| protection class                   | IP20   |                 |
| max. connecting wire cross section | up to 1.5 mm²,<br>supply (V+, V-): up to 2.5 mm² |                 |
| dimensions (LxWxH)                 | 120mmx30mmx22mm                                  | 120mmx41mmx22mm |
| housing/mounting                   | remote ceiling                                   |                 |

on request: output currents from 100mA to 1400mA available

for constant currents up to 500mA (on request up to 700mA):

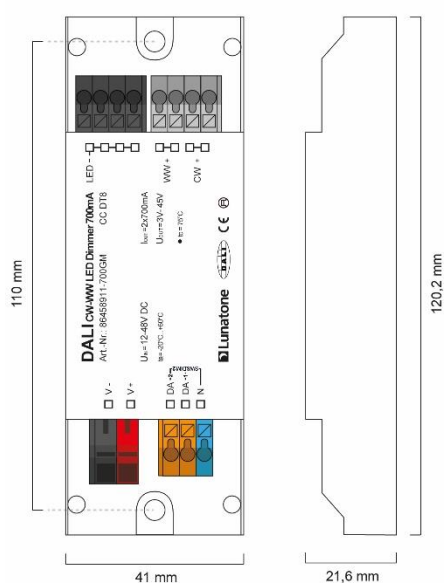


dimensions (common minus, remote ceiling)

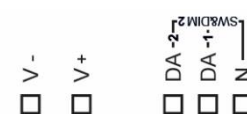
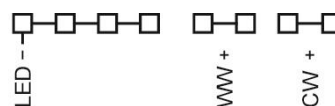


connection plan

for constant currents > 500mA:



dimensions (common minus, remote ceiling)



connection plan



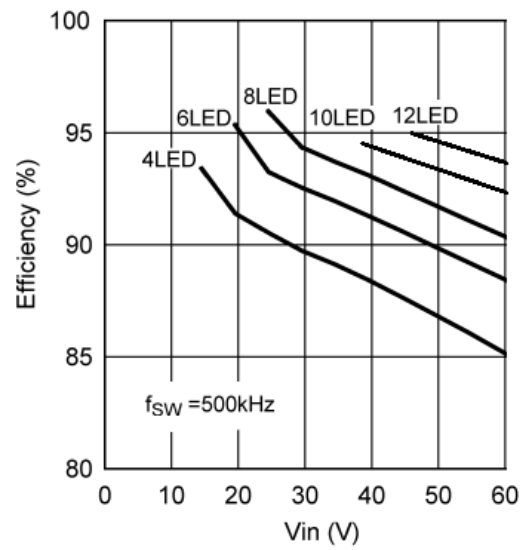
**Hint:**

For highest efficiency the input voltage should range between 3V and 10V above the LED-voltage:

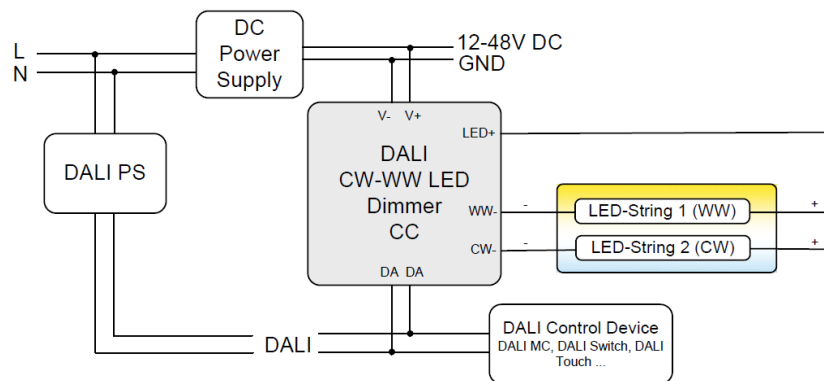
4-6 LEDs: 24V

6-9 LEDs: 36V

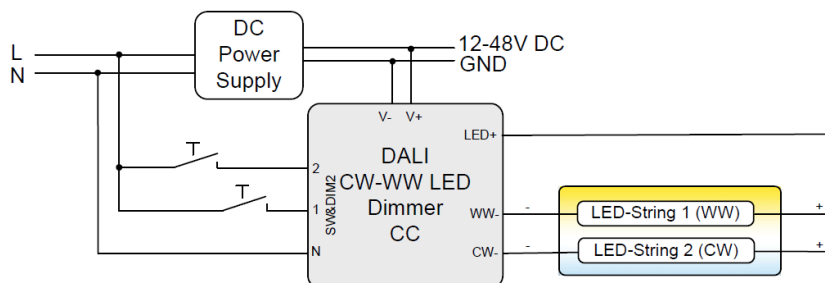
10-12 LEDs: 48V



DALI (common plus connector type):



SwitchDim2 (common plus connector type):



## Operating Modes

The device offers several operating modes:

### DT8 (factory default)

Default when connected to DALI in this operating mode one DALI-address for the independent control of light level and colour temperature is used (Device Type 8 Mode Tc).

Alternatively the device can be controlled using 2 switch-inputs for mains voltage (SwitchDim2):

SwD1: light level

short press: On/Off

long press: dimming

SwD2: colour temperature

long press: change colour temperature

### Balance&Dim

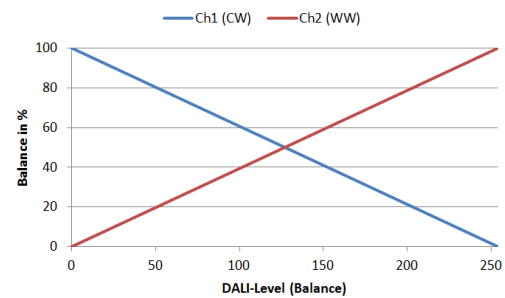
This operating mode is also suitable for operating tunable white luminaires using two DALI-addresses. The first controls the light level and the second is used for changing the distribution on the output channels (e.g. for tunable white applications or balancing direct/indirect lighting).

The Balance&Dim mode allows colour temperature adjustments without affecting the light level and vice versa. For each channel only DALI-standard commands like dim up/down but also DAP are used. Thus the device can be used with all common controls and gateways (e.g. KNX). The Balance&Dim mode provides an alternative to the DT8-Tc mode.

Can be operated via DALI or SwitchDim2:

DALI-address 1, SwD1: light level

DALI-address 2, SwD2: balance



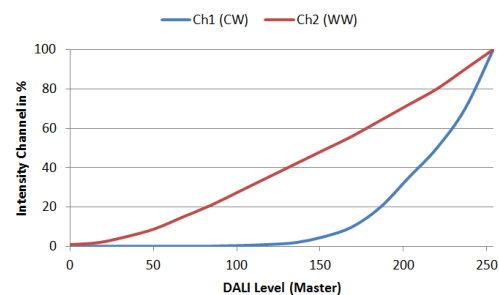
### Dim2Warm

Both output channels are controlled by one DALI-address or SwD-input. The balance is coupled directly to the DALI dim level – the smaller the dim level the warmer the light.

DALI-address 1, SwD1: Dim2Warm (Master)

short press: On/Off

long press: dimming

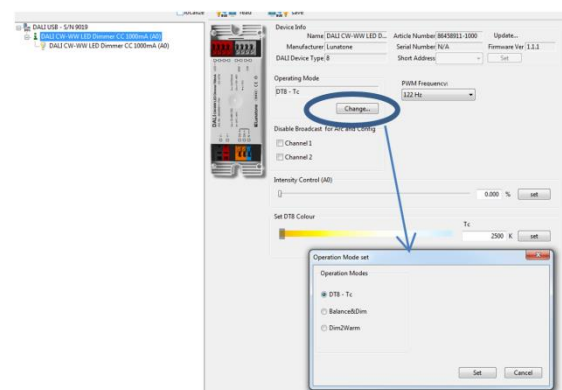


SwD2: scene selector

### Selection of operating mode

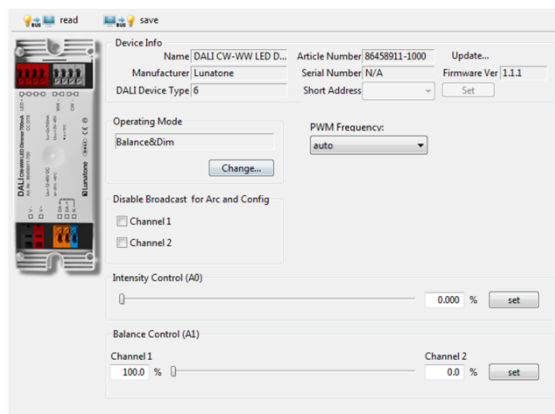
With the help of the PC-software tool DALI-Cockpit the operating mode can be easily set on the general settings page.

Operating mode DT8-Tc:

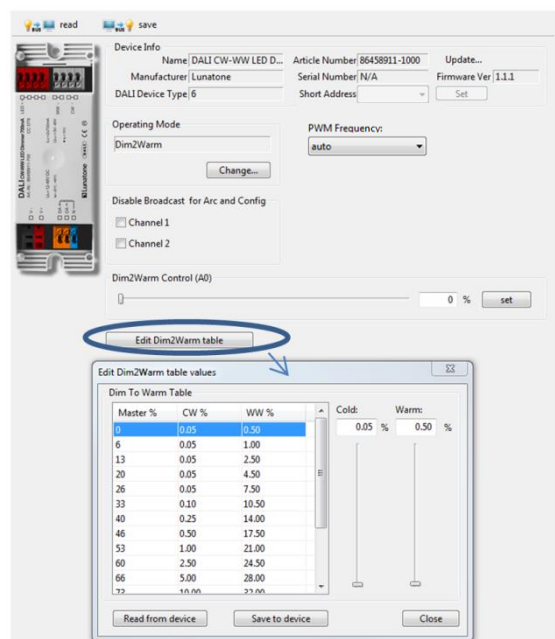


In addition, on the same page the PWM-frequency can be selected and basic control elements for testing each operating modes are available (DT8: slider for level and colour temperature, Balance&Dim: slider for level and balance, Dim2Warm: slider for input value adaption and Edit-Function for the Dim2Warm-table). Furthermore the broadcast control can be deactivated for each channel individually.

## Operating Mode Balance&Dim:



## Operating Mode Dim2Warm:



Switching between operating modes can also be done with the help of the DALI-command SET OPERATING MODE (IEC 62386-102 Ed.2). When changing the operating mode the number of used DALI-addresses can change as

well and this requires a new addressing procedure. In the DALI-Cockpit this address assignment is performed automatically.

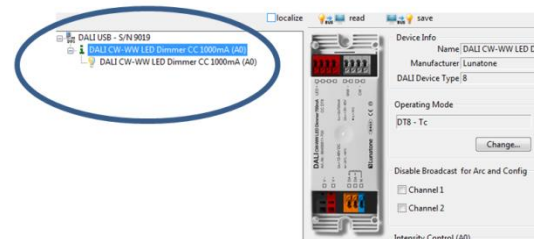
## Operating Mode:

| Number | Operating Mode        |
|--------|-----------------------|
| 0x0    | DT8 (factory default) |
| 0x92   | DT8                   |
| 0x94   | Balance&Dim           |
| 0x95   | Dim2Warm              |

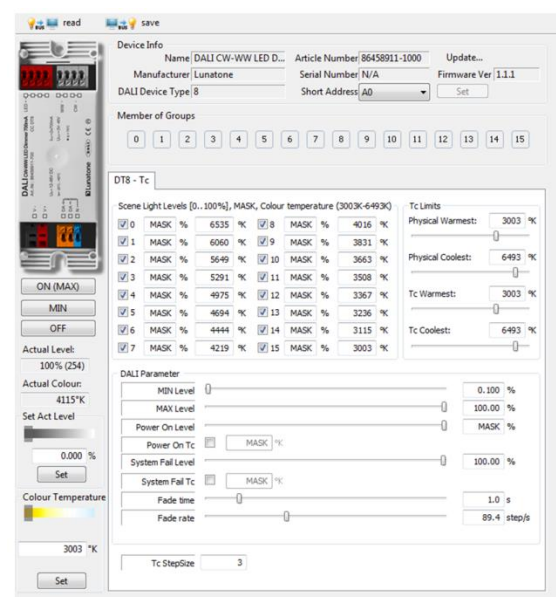
## Additional Settings

Besides the settings on the general page each channel can be selected separately in the component tree for individual configuration.

## Component Tree:



Settings in the operating mode DT8-Tc (displayed parameters are the factory default values):

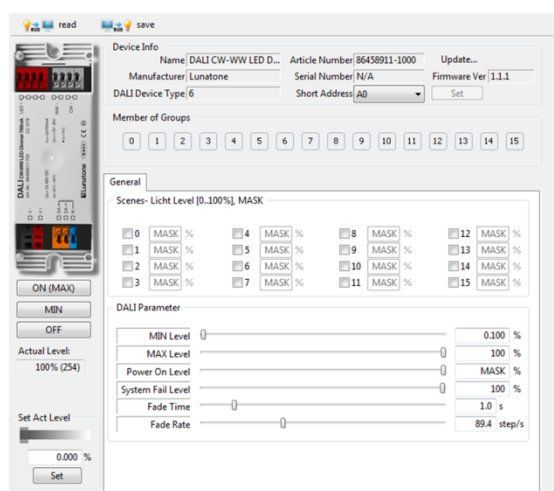




Beside the DT8 Tc standard settings, the Tc stepsize can be increased, this is a simple way to speed up colour temperature changes when using the commands TC STEP COOLER/WARMER.

In all other operating modes (Balance&Dim /Dim2Warm) the following settings are provided.

Operating mode Balance&Dim; Dim2Warm:



For each address the group membership can be set as well as scene values and DALI-parameters. In Balance&Dim operating mode all values assigned to channel 2 are representing the balance.

## Factory Default Settings

Before the initial addressing is performed, the device can already be controlled by a group address. This predefined grouping will be deleted during the first addressing procedure. Afterwards groups can be assigned as usual (e.g. with the help of the DALI Cockpit). By sending a DALI-Reset command the device is set to the default values defined in the standard.

Summary of the factory default settings (delivery state):

|                                     |   |                                     |   |      |    |                                     |    |                                     |   |      |    |      |    |                                     |   |      |   |      |    |                                     |   |      |   |      |    |                                     |   |      |   |      |    |                                     |    |      |   |      |    |                                     |   |      |   |      |    |                                     |    |      |   |      |    |                                     |   |      |   |      |    |                                     |    |      |   |      |    |                                     |   |      |   |      |    |                                     |    |      |   |      |    |                                     |   |      |   |      |    |                                     |    |      |   |      |    |                                     |   |      |   |      |    |                                     |    |      |   |      |    |
|-------------------------------------|---|-------------------------------------|---|------|----|-------------------------------------|----|-------------------------------------|---|------|----|------|----|-------------------------------------|---|------|---|------|----|-------------------------------------|---|------|---|------|----|-------------------------------------|---|------|---|------|----|-------------------------------------|----|------|---|------|----|-------------------------------------|---|------|---|------|----|-------------------------------------|----|------|---|------|----|-------------------------------------|---|------|---|------|----|-------------------------------------|----|------|---|------|----|-------------------------------------|---|------|---|------|----|-------------------------------------|----|------|---|------|----|-------------------------------------|---|------|---|------|----|-------------------------------------|----|------|---|------|----|-------------------------------------|---|------|---|------|----|-------------------------------------|----|------|---|------|----|
| operating mode                      | DT8   |                                     |   |      |    |                                     |    |                                     |   |      |    |      |    |                                     |   |      |   |      |    |                                     |   |      |   |      |    |                                     |   |      |   |      |    |                                     |    |      |   |      |    |                                     |   |      |   |      |    |                                     |    |      |   |      |    |                                     |   |      |   |      |    |                                     |    |      |   |      |    |                                     |   |      |   |      |    |                                     |    |      |   |      |    |                                     |   |      |   |      |    |                                     |    |      |   |      |    |                                     |   |      |   |      |    |                                     |    |      |   |      |    |
| SwitchDim2                          | SwD1: level<br>SwD2: colour temperature   |                                     |   |      |    |                                     |    |                                     |   |      |    |      |    |                                     |   |      |   |      |    |                                     |   |      |   |      |    |                                     |   |      |   |      |    |                                     |    |      |   |      |    |                                     |   |      |   |      |    |                                     |    |      |   |      |    |                                     |   |      |   |      |    |                                     |    |      |   |      |    |                                     |   |      |   |      |    |                                     |    |      |   |      |    |                                     |   |      |   |      |    |                                     |    |      |   |      |    |                                     |   |      |   |      |    |                                     |    |      |   |      |    |
| Min Level                           | 0.1%  |                                     |   |      |    |                                     |    |                                     |   |      |    |      |    |                                     |   |      |   |      |    |                                     |   |      |   |      |    |                                     |   |      |   |      |    |                                     |    |      |   |      |    |                                     |   |      |   |      |    |                                     |    |      |   |      |    |                                     |   |      |   |      |    |                                     |    |      |   |      |    |                                     |   |      |   |      |    |                                     |    |      |   |      |    |                                     |   |      |   |      |    |                                     |    |      |   |      |    |                                     |   |      |   |      |    |                                     |    |      |   |      |    |
| PowerOn Level                       | MASK (last value)   |                                     |   |      |    |                                     |    |                                     |   |      |    |      |    |                                     |   |      |   |      |    |                                     |   |      |   |      |    |                                     |   |      |   |      |    |                                     |    |      |   |      |    |                                     |   |      |   |      |    |                                     |    |      |   |      |    |                                     |   |      |   |      |    |                                     |    |      |   |      |    |                                     |   |      |   |      |    |                                     |    |      |   |      |    |                                     |   |      |   |      |    |                                     |    |      |   |      |    |                                     |   |      |   |      |    |                                     |    |      |   |      |    |
| Fade Time                           | 2 (1s)  |                                     |   |      |    |                                     |    |                                     |   |      |    |      |    |                                     |   |      |   |      |    |                                     |   |      |   |      |    |                                     |   |      |   |      |    |                                     |    |      |   |      |    |                                     |   |      |   |      |    |                                     |    |      |   |      |    |                                     |   |      |   |      |    |                                     |    |      |   |      |    |                                     |   |      |   |      |    |                                     |    |      |   |      |    |                                     |   |      |   |      |    |                                     |    |      |   |      |    |                                     |   |      |   |      |    |                                     |    |      |   |      |    |
| Fade Rate                           | 5 (89.4 steps/s)  |                                     |   |      |    |                                     |    |                                     |   |      |    |      |    |                                     |   |      |   |      |    |                                     |   |      |   |      |    |                                     |   |      |   |      |    |                                     |    |      |   |      |    |                                     |   |      |   |      |    |                                     |    |      |   |      |    |                                     |   |      |   |      |    |                                     |    |      |   |      |    |                                     |   |      |   |      |    |                                     |    |      |   |      |    |                                     |   |      |   |      |    |                                     |    |      |   |      |    |                                     |   |      |   |      |    |                                     |    |      |   |      |    |
| Tc-Stepsize                         | 3 increments  |                                     |   |      |    |                                     |    |                                     |   |      |    |      |    |                                     |   |      |   |      |    |                                     |   |      |   |      |    |                                     |   |      |   |      |    |                                     |    |      |   |      |    |                                     |   |      |   |      |    |                                     |    |      |   |      |    |                                     |   |      |   |      |    |                                     |    |      |   |      |    |                                     |   |      |   |      |    |                                     |    |      |   |      |    |                                     |   |      |   |      |    |                                     |    |      |   |      |    |                                     |   |      |   |      |    |                                     |    |      |   |      |    |
| PWM-frequency                       | 122Hz   |                                     |   |      |    |                                     |    |                                     |   |      |    |      |    |                                     |   |      |   |      |    |                                     |   |      |   |      |    |                                     |   |      |   |      |    |                                     |    |      |   |      |    |                                     |   |      |   |      |    |                                     |    |      |   |      |    |                                     |   |      |   |      |    |                                     |    |      |   |      |    |                                     |   |      |   |      |    |                                     |    |      |   |      |    |                                     |   |      |   |      |    |                                     |    |      |   |      |    |                                     |   |      |   |      |    |                                     |    |      |   |      |    |
| Groups before initial addressing:   | G0<br>(or G0 and G1 in operating mode Balance&Dim)  |                                     |   |      |    |                                     |    |                                     |   |      |    |      |    |                                     |   |      |   |      |    |                                     |   |      |   |      |    |                                     |   |      |   |      |    |                                     |    |      |   |      |    |                                     |   |      |   |      |    |                                     |    |      |   |      |    |                                     |   |      |   |      |    |                                     |    |      |   |      |    |                                     |   |      |   |      |    |                                     |    |      |   |      |    |                                     |   |      |   |      |    |                                     |    |      |   |      |    |                                     |   |      |   |      |    |                                     |    |      |   |      |    |
| Predefined Scene Values:            | <table><tr><td><input checked="" type="checkbox"/></td><td>0</td><td>MASK</td><td>%</td><td>6535</td><td>°K</td><td><input checked="" type="checkbox"/></td><td>8</td><td>MASK</td><td>%</td><td>4016</td><td>°K</td></tr><tr><td><input checked="" type="checkbox"/></td><td>1</td><td>MASK</td><td>%</td><td>6060</td><td>°K</td><td><input checked="" type="checkbox"/></td><td>9</td><td>MASK</td><td>%</td><td>3831</td><td>°K</td></tr><tr><td><input checked="" type="checkbox"/></td><td>2</td><td>MASK</td><td>%</td><td>5649</td><td>°K</td><td><input checked="" type="checkbox"/></td><td>10</td><td>MASK</td><td>%</td><td>3663</td><td>°K</td></tr><tr><td><input checked="" type="checkbox"/></td><td>3</td><td>MASK</td><td>%</td><td>5291</td><td>°K</td><td><input checked="" type="checkbox"/></td><td>11</td><td>MASK</td><td>%</td><td>3508</td><td>°K</td></tr><tr><td><input checked="" type="checkbox"/></td><td>4</td><td>MASK</td><td>%</td><td>4975</td><td>°K</td><td><input checked="" type="checkbox"/></td><td>12</td><td>MASK</td><td>%</td><td>3367</td><td>°K</td></tr><tr><td><input checked="" type="checkbox"/></td><td>5</td><td>MASK</td><td>%</td><td>4694</td><td>°K</td><td><input checked="" type="checkbox"/></td><td>13</td><td>MASK</td><td>%</td><td>3236</td><td>°K</td></tr><tr><td><input checked="" type="checkbox"/></td><td>6</td><td>MASK</td><td>%</td><td>4444</td><td>°K</td><td><input checked="" type="checkbox"/></td><td>14</td><td>MASK</td><td>%</td><td>3115</td><td>°K</td></tr><tr><td><input checked="" type="checkbox"/></td><td>7</td><td>MASK</td><td>%</td><td>4219</td><td>°K</td><td><input checked="" type="checkbox"/></td><td>15</td><td>MASK</td><td>%</td><td>3003</td><td>°K</td></tr></table> | <input checked="" type="checkbox"/> | 0 | MASK | %  | 6535                                | °K | <input checked="" type="checkbox"/> | 8 | MASK | %  | 4016 | °K | <input checked="" type="checkbox"/> | 1 | MASK | % | 6060 | °K | <input checked="" type="checkbox"/> | 9 | MASK | % | 3831 | °K | <input checked="" type="checkbox"/> | 2 | MASK | % | 5649 | °K | <input checked="" type="checkbox"/> | 10 | MASK | % | 3663 | °K | <input checked="" type="checkbox"/> | 3 | MASK | % | 5291 | °K | <input checked="" type="checkbox"/> | 11 | MASK | % | 3508 | °K | <input checked="" type="checkbox"/> | 4 | MASK | % | 4975 | °K | <input checked="" type="checkbox"/> | 12 | MASK | % | 3367 | °K | <input checked="" type="checkbox"/> | 5 | MASK | % | 4694 | °K | <input checked="" type="checkbox"/> | 13 | MASK | % | 3236 | °K | <input checked="" type="checkbox"/> | 6 | MASK | % | 4444 | °K | <input checked="" type="checkbox"/> | 14 | MASK | % | 3115 | °K | <input checked="" type="checkbox"/> | 7 | MASK | % | 4219 | °K | <input checked="" type="checkbox"/> | 15 | MASK | % | 3003 | °K |
| <input checked="" type="checkbox"/> | 0   | MASK                                | % | 6535 | °K | <input checked="" type="checkbox"/> | 8  | MASK                                | % | 4016 | °K |      |    |                                     |   |      |   |      |    |                                     |   |      |   |      |    |                                     |   |      |   |      |    |                                     |    |      |   |      |    |                                     |   |      |   |      |    |                                     |    |      |   |      |    |                                     |   |      |   |      |    |                                     |    |      |   |      |    |                                     |   |      |   |      |    |                                     |    |      |   |      |    |                                     |   |      |   |      |    |                                     |    |      |   |      |    |                                     |   |      |   |      |    |                                     |    |      |   |      |    |
| <input checked="" type="checkbox"/> | 1   | MASK                                | % | 6060 | °K | <input checked="" type="checkbox"/> | 9  | MASK                                | % | 3831 | °K |      |    |                                     |   |      |   |      |    |                                     |   |      |   |      |    |                                     |   |      |   |      |    |                                     |    |      |   |      |    |                                     |   |      |   |      |    |                                     |    |      |   |      |    |                                     |   |      |   |      |    |                                     |    |      |   |      |    |                                     |   |      |   |      |    |                                     |    |      |   |      |    |                                     |   |      |   |      |    |                                     |    |      |   |      |    |                                     |   |      |   |      |    |                                     |    |      |   |      |    |
| <input checked="" type="checkbox"/> | 2   | MASK                                | % | 5649 | °K | <input checked="" type="checkbox"/> | 10 | MASK                                | % | 3663 | °K |      |    |                                     |   |      |   |      |    |                                     |   |      |   |      |    |                                     |   |      |   |      |    |                                     |    |      |   |      |    |                                     |   |      |   |      |    |                                     |    |      |   |      |    |                                     |   |      |   |      |    |                                     |    |      |   |      |    |                                     |   |      |   |      |    |                                     |    |      |   |      |    |                                     |   |      |   |      |    |                                     |    |      |   |      |    |                                     |   |      |   |      |    |                                     |    |      |   |      |    |
| <input checked="" type="checkbox"/> | 3   | MASK                                | % | 5291 | °K | <input checked="" type="checkbox"/> | 11 | MASK                                | % | 3508 | °K |      |    |                                     |   |      |   |      |    |                                     |   |      |   |      |    |                                     |   |      |   |      |    |                                     |    |      |   |      |    |                                     |   |      |   |      |    |                                     |    |      |   |      |    |                                     |   |      |   |      |    |                                     |    |      |   |      |    |                                     |   |      |   |      |    |                                     |    |      |   |      |    |                                     |   |      |   |      |    |                                     |    |      |   |      |    |                                     |   |      |   |      |    |                                     |    |      |   |      |    |
| <input checked="" type="checkbox"/> | 4   | MASK                                | % | 4975 | °K | <input checked="" type="checkbox"/> | 12 | MASK                                | % | 3367 | °K |      |    |                                     |   |      |   |      |    |                                     |   |      |   |      |    |                                     |   |      |   |      |    |                                     |    |      |   |      |    |                                     |   |      |   |      |    |                                     |    |      |   |      |    |                                     |   |      |   |      |    |                                     |    |      |   |      |    |                                     |   |      |   |      |    |                                     |    |      |   |      |    |                                     |   |      |   |      |    |                                     |    |      |   |      |    |                                     |   |      |   |      |    |                                     |    |      |   |      |    |
| <input checked="" type="checkbox"/> | 5   | MASK                                | % | 4694 | °K | <input checked="" type="checkbox"/> | 13 | MASK                                | % | 3236 | °K |      |    |                                     |   |      |   |      |    |                                     |   |      |   |      |    |                                     |   |      |   |      |    |                                     |    |      |   |      |    |                                     |   |      |   |      |    |                                     |    |      |   |      |    |                                     |   |      |   |      |    |                                     |    |      |   |      |    |                                     |   |      |   |      |    |                                     |    |      |   |      |    |                                     |   |      |   |      |    |                                     |    |      |   |      |    |                                     |   |      |   |      |    |                                     |    |      |   |      |    |
| <input checked="" type="checkbox"/> | 6   | MASK                                | % | 4444 | °K | <input checked="" type="checkbox"/> | 14 | MASK                                | % | 3115 | °K |      |    |                                     |   |      |   |      |    |                                     |   |      |   |      |    |                                     |   |      |   |      |    |                                     |    |      |   |      |    |                                     |   |      |   |      |    |                                     |    |      |   |      |    |                                     |   |      |   |      |    |                                     |    |      |   |      |    |                                     |   |      |   |      |    |                                     |    |      |   |      |    |                                     |   |      |   |      |    |                                     |    |      |   |      |    |                                     |   |      |   |      |    |                                     |    |      |   |      |    |
| <input checked="" type="checkbox"/> | 7   | MASK                                | % | 4219 | °K | <input checked="" type="checkbox"/> | 15 | MASK                                | % | 3003 | °K |      |    |                                     |   |      |   |      |    |                                     |   |      |   |      |    |                                     |   |      |   |      |    |                                     |    |      |   |      |    |                                     |   |      |   |      |    |                                     |    |      |   |      |    |                                     |   |      |   |      |    |                                     |    |      |   |      |    |                                     |   |      |   |      |    |                                     |    |      |   |      |    |                                     |   |      |   |      |    |                                     |    |      |   |      |    |                                     |   |      |   |      |    |                                     |    |      |   |      |    |

## Purchase Order Information

**Art.Nr. 86458911-xxx:** DALI CW-WW LED Dimmer, CC – constant current xxxmA, **common plus connector**, supply 12V-48V DC, output voltage range: 3V-45V , 100mA - 500mA, back box

**Art.Nr. 86458911-xxxDE:** DALI CW-WW LED Dimmer, CC – constant current xxxmA, **common plus connector**, supply 12V-48V DC, output voltage range: 3V-45V, **SwitchDim2**, 100mA-500mA, remote ceiling & integration in luminaires

**Art.Nr. 86458911-xxx:** DALI CW-WW LED Dimmer, CC – constant current xxxmA, **common plus connector**, supply 12V-48V DC, output voltage range: 3V-45V, **SwitchDim2**, 500mA -1000mA, remote ceiling & integration in luminaires

**Art.Nr. 86458911-xxxGMDE:** DALI CW-WW LED Dimmer, CC – constant current xxxmA,

**common minus connector**, supply 12V-48V  
DC, output voltage range: 3V-45V,  
**SwitchDim2**, 100mA-500mA, remote ceiling &  
integration in luminaires

**Art.Nr. 86458911-xxxGM**: DALI CW-WW LED  
Dimmer, CC – constant current xxxmA,  
**common minus connector**, supply 12V-48V  
DC, output voltage range: 3V-45V,  
**SwitchDim2**, 500mA -1400mA, remote ceiling  
& integration in luminaires

## Additional Information

Datasheets and manuals

<https://jumitech/produkter>

DALI-Cockpit – free configuration tool from  
Lunatone for DALI systems

<http://lunatone.at/en/downloads/Lunatone-DALI-Cockpit.zip>

## Contact

Technical Support: [support@jumitech.dk](mailto:support@jumitech.dk)

Requests: [salg@jumitech.dk](mailto:salg@jumitech.dk)

[www.jumitech.dk](http://www.jumitech.dk)

# JUMITECH



## Disclaimer

Subject to change. Information provided without guarantee.  
The datasheet refers to the current delivery.

The compatibility with other devices must be tested in advance  
to the installation.

## DALI 4Ch LED Dimmer CC



### Datenblatt Control Gear

4-channel LED Dimmer (CC, DT6)

common plus connector:

Art. Nr. 89453855-350 (350mA)

Art. Nr. 89453855-500 (500mA)

common minus connector:

Art. Nr. 89453855-350GM (350mA)

Art. Nr. 89453855-500GM (500mA)

Art. Nr. 89453855-700GM (700mA)

# DALI 4Ch LED Dimmer CC Control Gear

## Overview

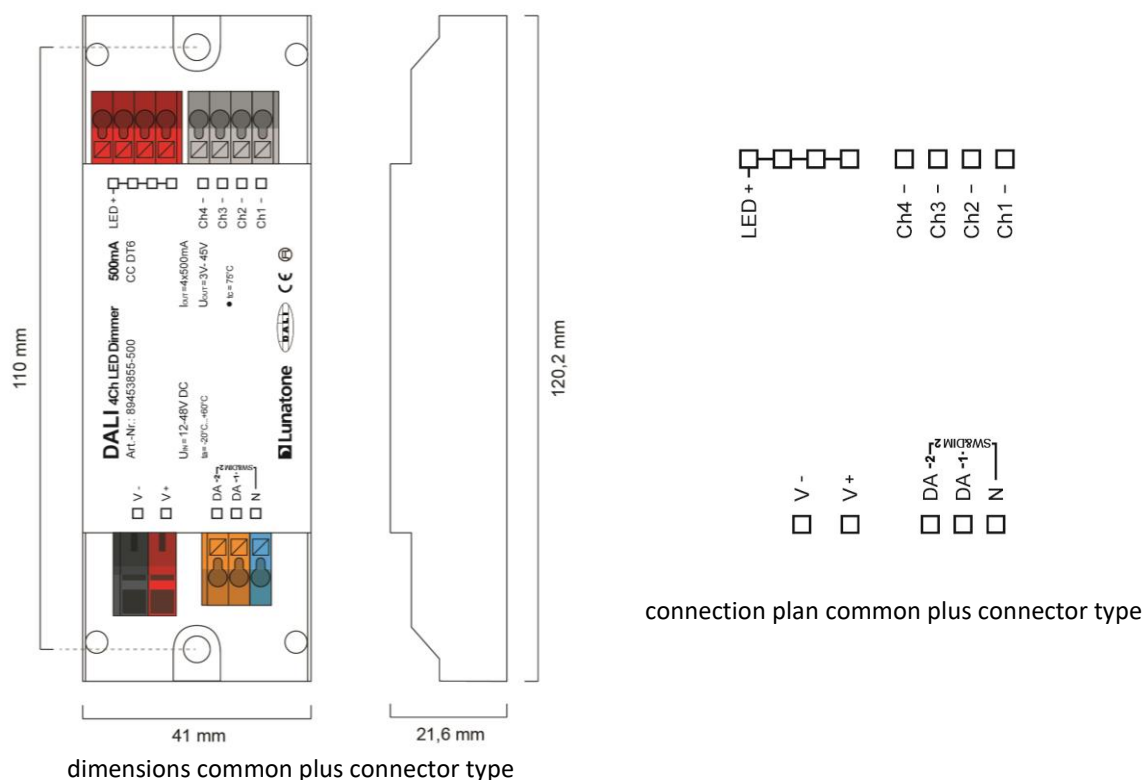
- 4 channel DALI LED-Dimmer
- suitable for constant current LED-modules
- **Operating Mode DT6:** individual channel control via 4 DALI addresses
- **Operating Mode Colour&Dim:** control by 2 DALI-addresses, one for adjusting the light level and one for adjusting the colour
- **SwitchDim2:** 2 switch-inputs offer control of light level and colour without DALI
- dimming range 0.1%-100%
- adjustable PWM-frequency (122Hz/244Hz/488Hz/976Hz)
- types with common plus connector with constant currents up to 500mA
- types with common minus connector with constant currents up to 500mA
- suitable for integration in luminaires and remote ceiling
- supply voltage 12V to 48V DC
- output voltage up to 45VDC
- short circuit protection
- low standby power consumption
- high efficiency
- configuration via PC-software DALI-Cockpit and DALI USB-interface
- user-friendly factory default settings

## Specification, Characteristics

### common plus connector:

| type                                      | DALI 4Ch 350mA GP  | DALI 4Ch 500mA GP |
|---|--|-------------------|
| article number                            | 89453855-350   | 89453855-500      |
| electrical data:                          |  |                   |
| supply voltage $V_{in}$                   | 12VDC-48VDC  |                   |
| max. input current $I_{inmax}$            | 1400mA   | 2000mA            |
| max. output current per channel $I_{led}$ | 350mA  | 500mA             |
| output voltage range $V_{led}$            | 3V-45V (at 48V supply)   |                   |
| control input                             | DALI / SwitchDim2 (mains voltage)                                      |                   |
| current consumption DALI                  | 2mA  |                   |
| number of DALI-addresses                  | operating mode DT6: 4<br>operating mode Colour&Dim: 2                  |                   |
| standby power consumption (12V)           | ~ 180mW  |                   |
| technical data:                           |  |                   |
| power on behaviour                        | configurable via DALI: 0%-100% or last value                           |                   |
| ambient temperature                       | -20°C to +60°C   |                   |
| expected lifetime                         | >100000h (at $T_c \leq 75^\circ\text{C}$ )                             |                   |
| protection class                          | IP20   |                   |
| max. connecting wire cross section        | up to 1.5 mm <sup>2</sup> , supply (V+, V-): up to 2.5 mm <sup>2</sup> |                   |
| dimensions (LxWxH)                        | 120mmx41mmx22 mm   |                   |
| housing/mounting                          | remote ceiling   |                   |

on request: output currents from 100mA to 500mA available



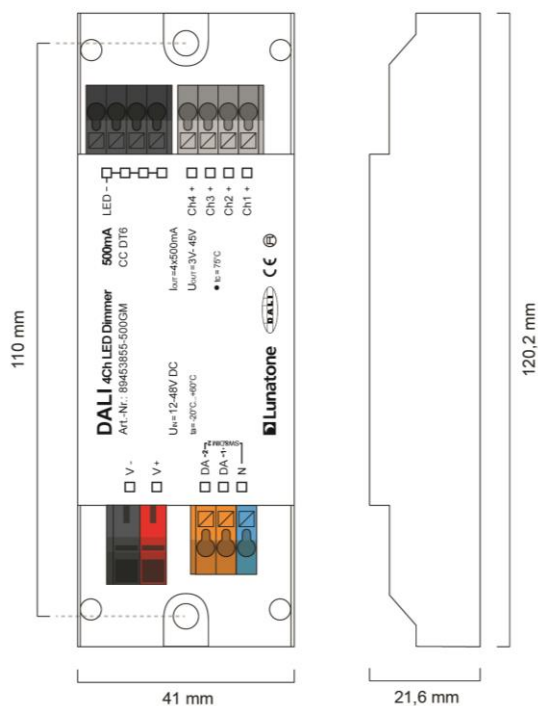
#### common minus connector:

| type                                      | DALI 4Ch 350mA GM  | DALI 4Ch 500mA GM | DALI 4Ch 700mA GM |
|---|--|-------------------|-------------------|
| article number                            | 89453855-350GM   | 89453855-500GM    | 89453855-700GM    |
| electrical data:                          |  |                   |                   |
| supply voltage $V_{in}$                   | 12VDC-48VDC  |                   |                   |
| max. input current $I_{inmax}$            | 1400mA   | 2000mA            | 2800mA            |
| max. output current per channel $I_{led}$ | 350mA  | 500mA             | 700mA             |
| output voltage range $V_{led}$            | 3V-45V (at 48V supply)   |                   |                   |
| control input                             | DALI<br>SwitchDim2 (mains voltage)                                     |                   |                   |
| current consumption DALI                  | 2mA  |                   |                   |
| number of DALI-addresses                  | operating mode DT6: 4<br>operating mode Colour&Dim: 2                  |                   |                   |
| standby power consumption (12V)           | ~ 180mW  |                   |                   |
| technical data:                           |  |                   |                   |
| power on behaviour                        | configurable via DALI: 0%-100% or last value                           |                   |                   |
| ambient temperature                       | -20°C to +60°C   |                   |                   |
| expected lifetime                         | >100000h (at $T_c \leq 75^{\circ}\text{C}$ )                           |                   |                   |
| protection class                          | IP20   |                   |                   |
| max. connecting wire cross section        | up to 1.5 mm <sup>2</sup> , supply (V+, V-): up to 2.5 mm <sup>2</sup> |                   |                   |
| dimensions (LxWxH)                        | 120mmx41mmx22 mm   |                   |                   |

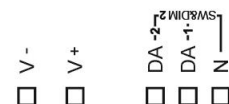
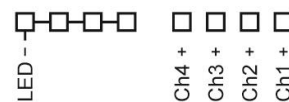
housing/mounting

remote ceiling

on request: output currents from 100mA to 700mA available



dimensions GM



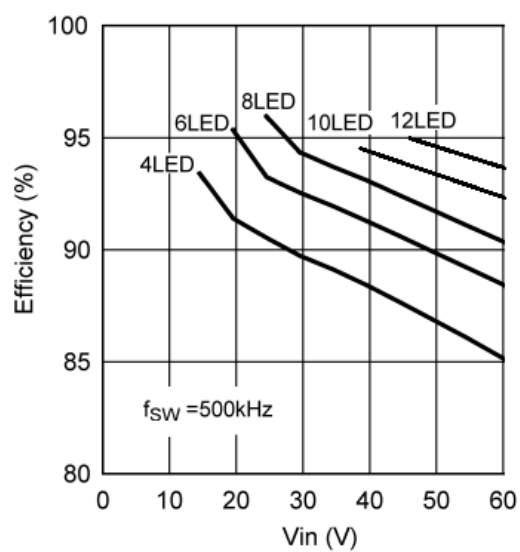
connection plan GM



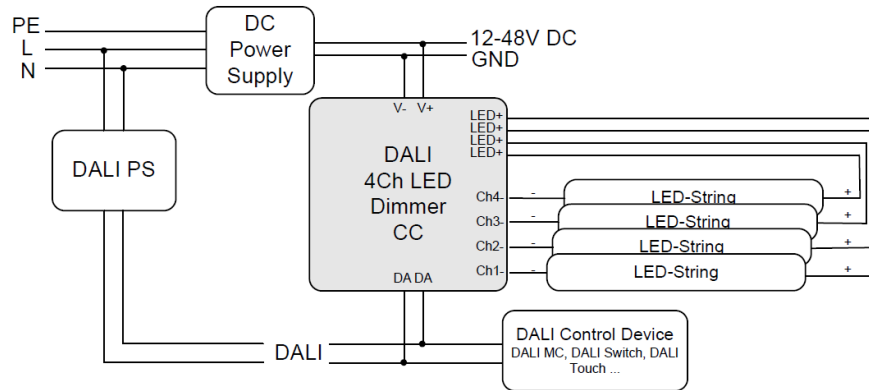
## Hint:

For highest efficiency the input voltage should range between 3V and 10V above the LED-voltage:

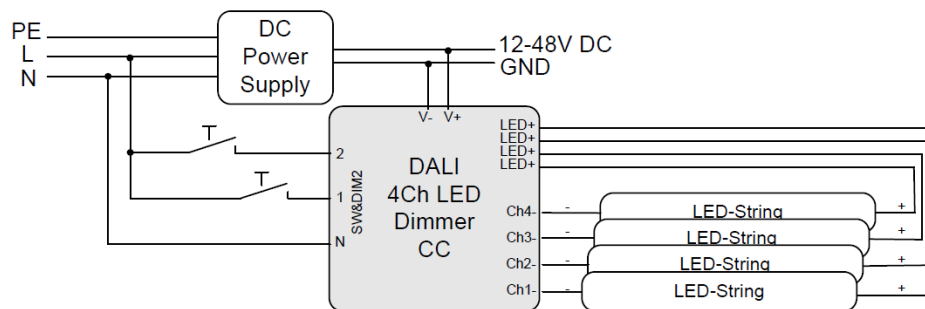
- 4-6 LEDs: 24V
- 6-9LEDs: 36V
- 10-12 LEDs: 48V



DALI (common plus connector type):



SwitchDim2 (common plus connector type):



## Operating Modes

The device offers several operating modes:

### DT6 (factory default)

In this operating mode each channel can be controlled by its own DALI address (Device Type 6).

Alternatively the device can be controlled using 2 switch-inputs for mains voltage (SwitchDim2):

SwD1: light level

short press: On/Off

long press: dimming

SwD2: scene selector (short press)

## Colour&Dim

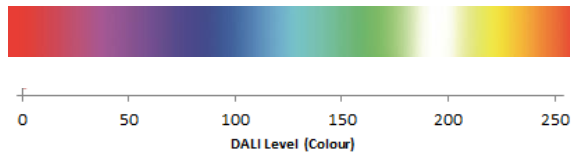
This operating mode is suitable for operating RGBW—luminaires. Two DALI-addresses are used, the first to control the light level and the second for changing the distribution on the output channels (e.g. for colour adjustments).

The Colour&Dim mode allows colour adjustments without affecting the light level and vice versa. For each channel only DALI-standard commands like dim up/down but also DAP are used. Thus the device can be used with all common controls and gateways (e.g. KNX). The Colour&Dim mode provides an alternative to the DT8-RGBWAF mode.

Can be operated via DALI or SwitchDim2:

DALI-address 1, SwD1: light level

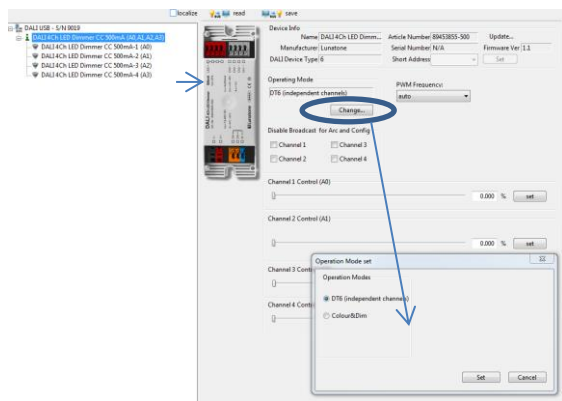
DALI-address 2, SwD2: colour



## Selection of operating mode

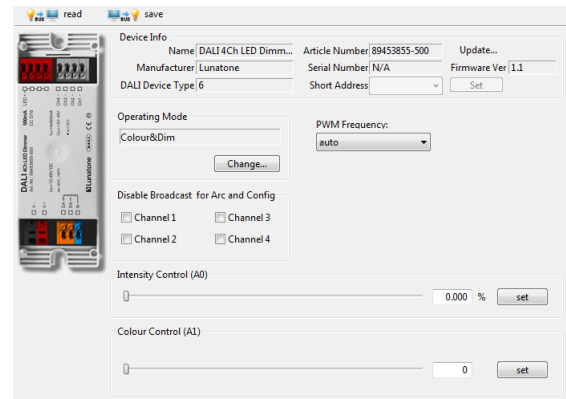
With the help of the PC-software tool DALI-Cockpit the operating mode can be easily set on the general settings page.

Operating mode DT6:



In addition, on the same page the PWM-frequency can be selected and basic control elements for testing each operating modes are available (4 sliders for the level of each channel in operating mode DT6 and slider for level and colour in the operating mode Colour&Dim). Furthermore the broadcast control can be deactivated for each channel individually.

Operating mode Colour&Dim:



Switching between operating modes can also be done with the help of the DALI-command SET OPERATING MODE (IEC 62386-102 Ed.2). When changing the operating mode the number of used DALI-addresses can change as well and this requires a new addressing procedure. In the DALI-Cockpit this address assignment is performed automatically.

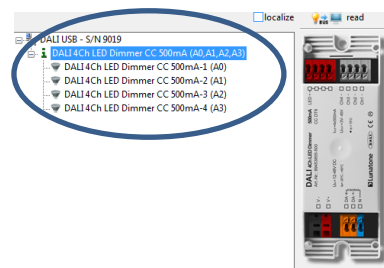
Operating Mode:

| Number | Operating Mode        |
|--------|-----------------------|
| 0      | DT6 (factory default) |
| 0x90   | DT6                   |
| 0x93   | Colour&Dim            |

## Additional Settings

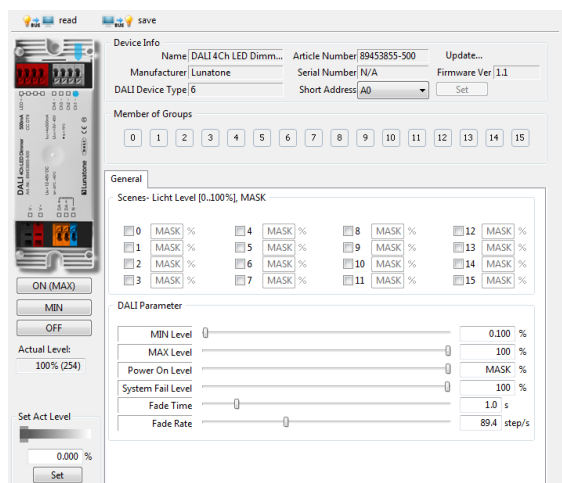
Besides the settings on the general page each channel can be selected separately in the component tree for individual configuration.

Component Tree:



Settings for each channel (operating mode DT6 and Colour&Dim, in screenshot factory defaults are shown):





For each address the group membership can be set as well as scene values and DALI-parameters. In Colour&Dim operating mode, all values assigned to channel 2 are representing colours.

## Factory Default Settings

Before the initial addressing is performed, the device can already be controlled by group addresses. This predefined grouping will be deleted during the first addressing procedure. Afterwards groups can be assigned as usual (e.g. with the help of the DALI Cockpit). By sending a DALI-Reset command the device is set to DALI default values as defined in the standard.

Summary of the factory default settings (delivery state):

|                |   |
|----------------|---|
| Operating mode | DT6                                       |
| SwitchDim2     | SwD1: light level<br>SwD2: scene selector |
| Min Level      | 0.1%                                      |
| PowerOn Level  | MASK (last value)                         |
| Fade Time      | 2 (1s)                                    |
| Fade Rate      | 5 (89.4 steps/s)                          |
| PWM-frequency  | 122Hz                                     |
| Groups before  | G0 – channel1<br>G1 – channel2            |

initial  
addressing:  
predefined  
scene  
values:

G2 – channel3  
G3 – channel4

| Scene | Ch1  | Ch2  | Ch3  | Ch4  |
|-------|------|------|------|------|
| 0     | 100% | 0%   | 0%   | 0%   |
| 1     | 0%   | 100% | 0%   | 0%   |
| 2     | 0%   | 0%   | 100% | 0%   |
| 3     | 0%   | 0%   | 0%   | 100% |
| 4     | 0%   | 0%   | 100% | 100% |
| 5     | 0%   | 100% | 0%   | 100% |
| 6     | 100% | 0%   | 0%   | 100% |
| 7     | 100% | 0%   | 100% | 0%   |
| 8     | 100% | 100% | 0%   | 0%   |
| 9     | 0%   | 100% | 100% | 0%   |
| 10    | 100% | 0%   | 100% | 100% |
| 11    | 100% | 100% | 0%   | 100% |
| 12    | 100% | 100% | 100% | 0%   |
| 13    | 0%   | 100% | 100% | 100% |
| 14    | 100% | 100% | 100% | 100% |
| 15    | 0%   | 0%   | 0%   | 0%   |

## Purchase Order Information

**Art.Nr. 89453855-xxx:** DALI 4Ch LED Dimmer, CC – constant current xxx mA (100mA-500mA), **common plus connector**, supply 12V-48V DC, output voltage range 3V-45V DC, **SwitchDim2**, remote ceiling & integration in luminaires

**Art.Nr. 89453855-xxxGM:** DALI 4Ch LED Dimmer, CC – constant current xxx mA (100mA-700mA), **common minus connector**, supply 12V-48V DC, output voltage range 3V-45V DC, **SwitchDim2**, remote ceiling & integration in luminaires

## Additional Information

Datasheets and manuals

<https://jumitech/produkter>

DALI-Cockpit – free configuration tool from  
Lunatone for DALI systems

<http://lunatone.at/en/downloads/Lunatone-DALI-Cockpit.zip>

## Contact

Technical Support: [support@jumitech.dk](mailto:support@jumitech.dk)

Requests: [salg@jumitech.dk](mailto:salg@jumitech.dk)

[www.jumitech.dk](http://www.jumitech.dk)

# JUMiTECH



## Disclaimer

Subject to change. Information provided without guarantee.  
The datasheet refers to the current delivery.

The compatibility with other devices must be tested in advance  
to the installation.

# JUMiTECH

---

## DALI 3Ch LED Dimmer CC



### Datasheet Control Gear

3-channel LED Dimmer (CC, DT6)

common plus connector:

Art. Nr. 89453846-350 (350mA)

Art. Nr. 89453846-500 (500mA)

common minus connector:

Art. Nr. 89453846-350GM (350mA)

Art. Nr. 89453846-500GM (500mA)

Art. Nr. 89453846-700GM (700mA)

# DALI 3Ch LED Dimmer CC Control Gear

## Overview

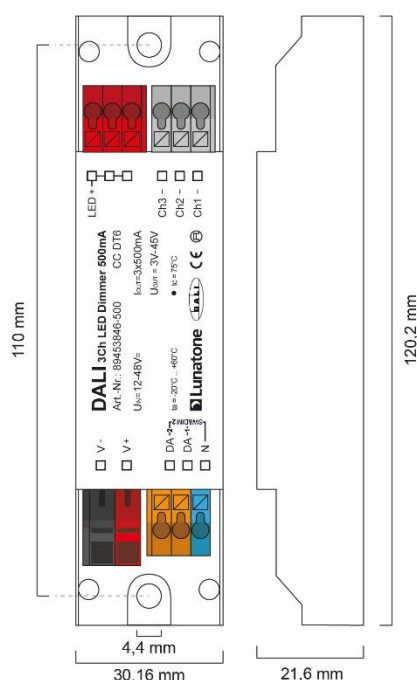
- 3 channel DALI LED-Dimmer
- suitable for constant current LED-modules
- **Operating Mode DT6:** individual channel control via 3 DALI addresses
- **Operating Mode Colour&Dim:** control by 2 DALI-addresses, one for adjusting the light level and one for adjusting the colour
- **SwitchDim2:** 2 switch-inputs offer control of light level and colour without DALI
- dimming range 0.1%-100%
- adjustable PWM-frequency (122Hz/244Hz/488Hz/976Hz)
- types with common plus connector with constant currents up to 500mA
- types with common minus connector with constant currents up to 700mA
- suitable for integration in luminaires and remote ceiling
- supply voltage 12V to 48V DC
- output voltage up to 45VDC
- short circuit protection
- low standby power consumption
- high efficiency
- configuration via PC-software DALI-Cockpit and DALI USB-interface
- user-friendly factory default settings

## Specification, Characteristics

### common plus connector:

| type                                      | DALI 3Ch 350mA GP  |  | DALI 3Ch 500mA GP |  |
|---|--|--|-------------------|--|
| article number                            | 89453846-350   |  | 89453846-500      |  |
| electrical data:                          |  |  |                   |  |
| supply voltage $V_{in}$                   | 12VDC-48VDC  |  |                   |  |
| max. input current $I_{inmax}$            | 1050mA   |  | 1500mA            |  |
| max. output current per channel $I_{led}$ | 350mA  |  | 500mA             |  |
| output voltage range $V_{led}$            | 3V-45V (at 48V supply)   |  |                   |  |
| control input                             | DALI / SwitchDim2 (mains voltage)                                      |  |                   |  |
| current consumption DALI                  | 2mA  |  |                   |  |
| number of DALI-addresses                  | operating mode DT6: 3<br>operating mode Colour&Dim: 2                  |  |                   |  |
| standby power consumption (12V)           | ~ 180mW  |  |                   |  |
| technical data:                           |  |  |                   |  |
| power on behaviour                        | configurable via DALI: 0%-100% or last value                           |  |                   |  |
| ambient temperature                       | -20°C to +60°C   |  |                   |  |
| expected lifetime                         | >100000h (at $T_c \leq 75^\circ\text{C}$ )                             |  |                   |  |
| protection class                          | IP20   |  |                   |  |
| max. connecting wire cross section        | up to 1.5 mm <sup>2</sup> , supply (V+, V-): up to 2.5 mm <sup>2</sup> |  |                   |  |
| dimensions (LxWxH)                        | 120mmx30mmx22 mm   |  |                   |  |
| housing/mounting                          | remote ceiling   |  |                   |  |

on request: output currents from 100mA to 500mA available



dimensions common plus connector type

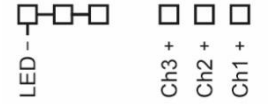
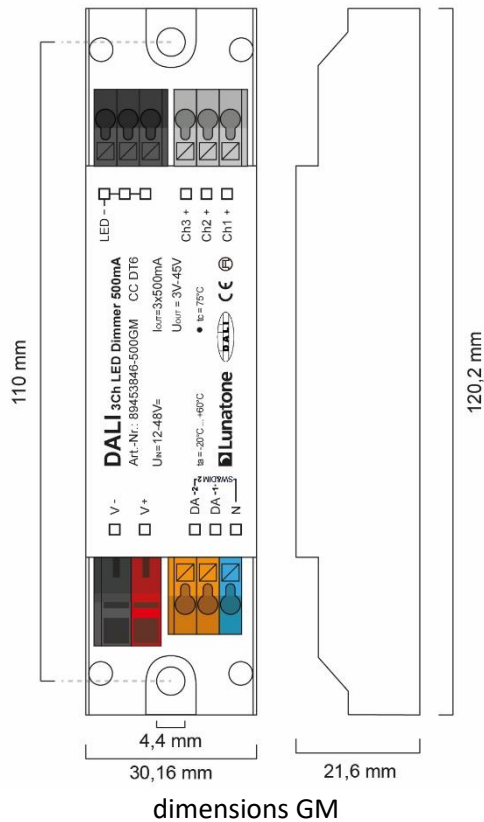


connection plan common plus  
connector type

#### common minus connector:

| type                                      | DALI 3Ch 350mA GM  |        | DALI 3Ch 500mA GM | DALI 3Ch 700mA GM |
|---|--|--------|-------------------|-------------------|
| article number                            | 89453846-350GM   |        | 89453846-500GM    | 89453846-700GM    |
| electrical data:                          |  |        |                   |                   |
| supply voltage $V_{in}$                   | 12VDC-48VDC  |        |                   |                   |
| max. input current $I_{inmax}$            | 1050mA   | 1500mA | 2100mA            |                   |
| max. output current per channel $I_{led}$ | 350mA  | 500mA  | 700mA             |                   |
| output voltage range $V_{led}$            | 3V-45V (at 48V supply)   |        |                   |                   |
| control input                             | DALI<br>SwitchDim2 (mains voltage)                                     |        |                   |                   |
| current consumption DALI                  | 2mA  |        |                   |                   |
| number of DALI-addresses                  | operating mode DT6: 3<br>operating mode Colour&Dim: 2                  |        |                   |                   |
| standby power consumption (12V)           | ~ 180mW  |        |                   |                   |
| technical data:                           |  |        |                   |                   |
| power on behaviour                        | Configurable via DALI: 0%-100% or last value                           |        |                   |                   |
| ambient temperature                       | -20°C to +60°C   |        |                   |                   |
| expected lifetime                         | >100000h (at $T_c \leq 75^{\circ}C$ )                                  |        |                   |                   |
| protection class                          | IP20   |        |                   |                   |
| max. connecting wire cross section        | up to 1.5 mm <sup>2</sup> , supply (V+, V-): up to 2.5 mm <sup>2</sup> |        |                   |                   |
| dimensions (LxWxH)                        | 120mmx30mmx22 mm   |        |                   |                   |
| housing/mounting                          | remote ceiling   |        |                   |                   |

on request: output currents from 100mA to 700mA available



connection plan GM



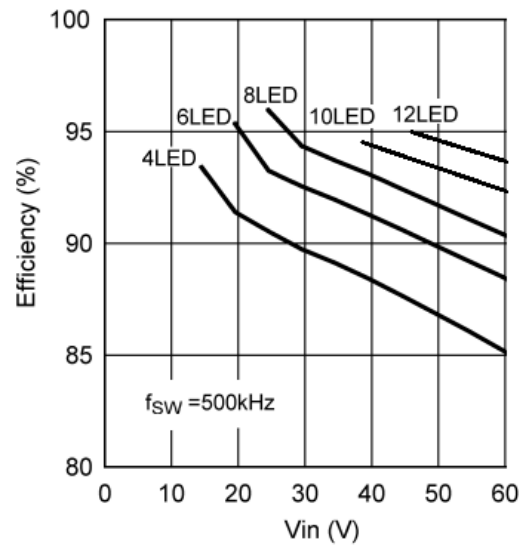
## Hint:

For highest efficiency the input voltage should range between 3V and 10V above the LED-voltage:

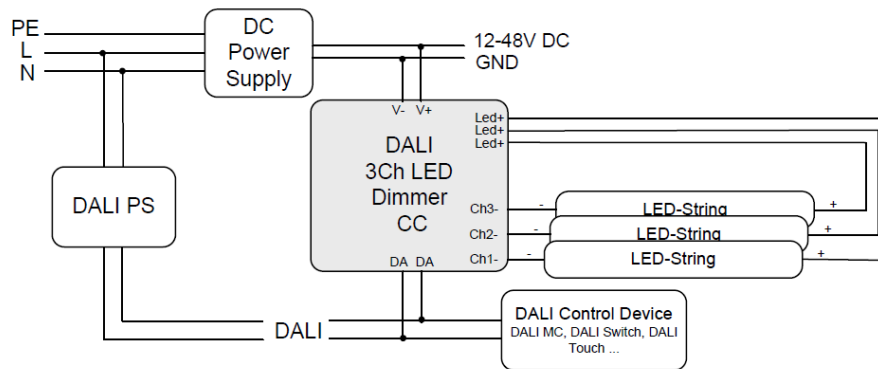
4-6 LEDs: 24V

6-9LEDs: 36V

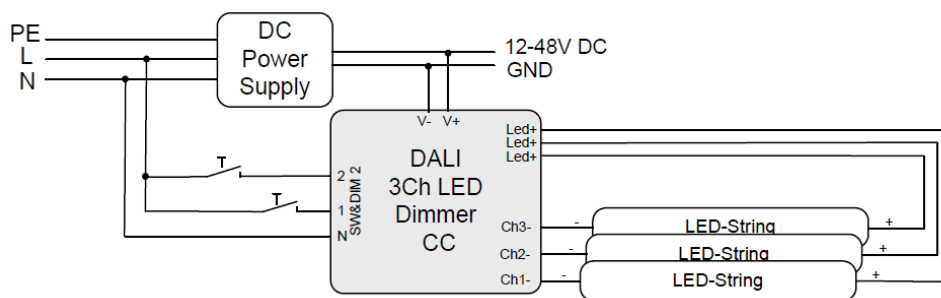
10-12 LEDs: 48V



DALI (common plus connector type):



SwitchDim2 (common plus connector type):



## Operating Modes

The device offers several operating modes:

### DT6 (factory default)

In this operating mode each channel can be controlled by its own DALI address (Device Type 6).

Alternatively the device can be controlled using 2 switch-inputs for mains voltage (SwitchDim2):

SwD1: light level

short press: On/Off

long press: dimming

SwD2: scene selector (short press)

### Colour&Dim

This operating mode is suitable for operating RGB—luminaires. Two DALI-addresses are used, the first to control the light level and the

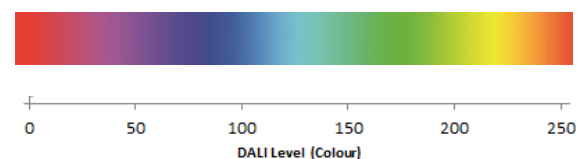
second for changing the distribution on the output channels (e.g. for colour adjustments).

The Colour&Dim mode allows colour adjustments without affecting the light level and vice versa. For each channel only DALI-standard commands like dim up/down but also DAP are used. Thus the device can be used with all common controls and gateways (e.g. KNX). The Colour&Dim mode provides an alternative to the DT8-RGBWAF mode.

Can be operated via DALI or SwitchDim2:

DALI-address 1, SwD1: light level

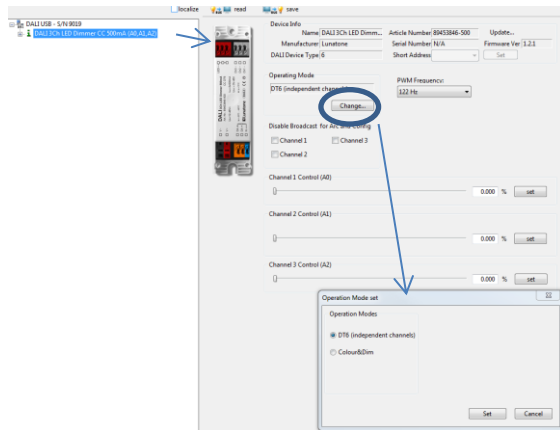
DALI-address 2, SwD2: colour



## Selection of operating mode

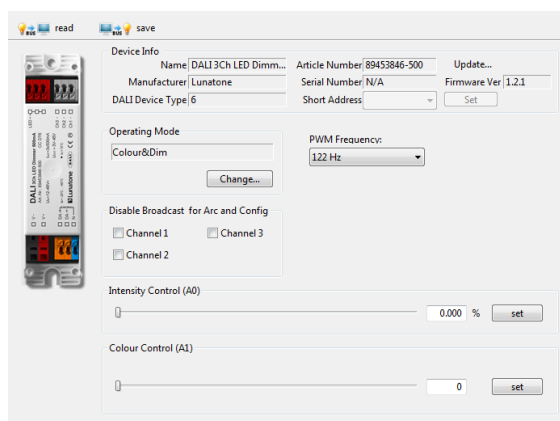
With the help of the PC-software tool DALI-Cockpit the operating mode can be easily set on the general settings page.

Operating mode DT6:



In addition, on the same page the PWM-frequency can be selected and basic control elements for testing each operating modes are available (3 sliders for the level of each channel in operating mode DT6 and slider for level and colour in the operating mode Colour&Dim). Furthermore the broadcast control can be deactivated for each channel individually.

Operating mode Colour&Dim:



Switching between operating modes can also be done with the help of the DALI-command SET OPERATING MODE (IEC 62386-102 Ed.2). When changing the operating mode the number of used DALI-addresses can change as well and this requires a new addressing

procedure. In the DALI-Cockpit this address assignment is performed automatically.

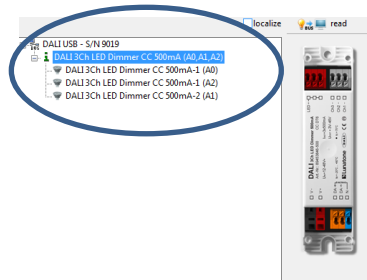
Operating Mode:

| Number | Operating Mode        |
|--------|-----------------------|
| 0      | DT6 (factory default) |
| 0x90   | DT6                   |
| 0x93   | Colour&Dim            |

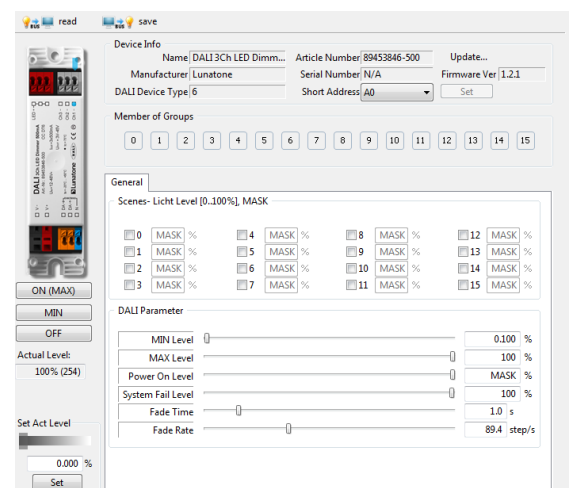
## Additional Settings

Besides the settings on the general page each channel can be selected separately in the component tree for individual configuration.

Component Tree:



Settings for each channel (operating mode DT6 and Colour&Dim, in screenshot factory defaults are shown):



For each address the group membership can be set as well as scene values and DALI-parameters. In Colour&Dim operating mode,



all values assigned to channel 2 are representing colours.

## Factory Default Settings

Before the initial addressing is performed, the device can already be controlled by group addresses. This predefined grouping will be deleted during the first addressing procedure. Afterwards groups can be assigned as usual (e.g. with the help of the DALI Cockpit). By sending a DALI-Reset command the device is set to DALI default values as defined in the standard.

Summary of the factory default settings (delivery state):

|                                   |   |            |            |            |
|-----------------------------------|---|------------|------------|------------|
| Operating mode                    | DT6   |            |            |            |
| SwitchDim 2                       | SwD1: light level<br>SwD2: scene selector       |            |            |            |
| Min Level                         | 0.1%  |            |            |            |
| PowerOn Level                     | MASK (last value)                               |            |            |            |
| Fade Time                         | 2 (1s)  |            |            |            |
| Fade Rate                         | 5 (89.4 steps/s)                                |            |            |            |
| PWM-frequency                     | 122Hz   |            |            |            |
| Groups before initial addressing: | G0 – channel1<br>G1 – channel2<br>G2 – channel3 |            |            |            |
| predefined scene values           | <b>Scene</b>                                    | <b>Ch1</b> | <b>Ch2</b> | <b>Ch3</b> |
|                                   | 0, 8  | 100 %      | 0%         | 0%         |
|                                   | 1, 9  | 0%         | 100 %      | 0%         |
|                                   | 2, 10   | 0%         | 0%         | 100 %      |
|                                   | 3, 11   | 0%         | 100 %      | 100 %      |
|                                   | 4, 12   | 100 %      | 0%         | 100 %      |
|                                   | 5, 13   | 100 %      | 100 %      | 0%         |
|                                   | 6, 14   | 100 %      | 100 %      | 100 %      |
|                                   | 7, 15   | 0%         | 0%         | 0%         |

## Purchase Order Information

**Art.Nr. 89453846-xxx:** DALI 3Ch LED Dimmer, CC – constant current xxx mA (100mA-500mA), **common plus connector**, supply 12V-48V DC, output voltage range 3V-45V DC, **SwitchDim2**, remote ceiling & integration in luminaires

**Art.Nr. 89453846-xxxGM:** DALI 3Ch LED Dimmer, CC – constant current xxx mA (100mA-700mA), **common minus connector**, supply 12V-48V DC, output voltage range 3V-45V DC, **SwitchDim2**, remote ceiling & integration in luminaires

## Additional Information

Datasheets and manuals

<https://jumitech/produkter>

DALI-Cockpit – free configuration tool from  
Lunatone for DALI systems

<http://lunatone.at/en/downloads/Lunatone-DALI-Cockpit.zip>

## Contact

Technical Support: [support@jumitech.dk](mailto:support@jumitech.dk)

Requests: [alg@jumitech.dk](mailto:alg@jumitech.dk)

[www.jumitech.dk](http://www.jumitech.dk)

# JUMiTECH



## Disclaimer

Subject to change. Information provided without guarantee.  
The datasheet refers to the current delivery.

The compatibility with other devices must be tested in advance  
to the installation.

## DALI 2Ch LED Dimmer CC

### Datasheet Control Gear



2-channel LED Dimmer (CC, DT6)

common plus connector:

Art. Nr. 89453845-350 (350mA)

Art.Nr. 89453845-350DE (350mA)

Art. Nr. 89453845-500 (500mA)

Art. Nr. 89453845-500DE (500mA)

Art. Nr. 89453845-700 (700mA)

Art. Nr. 89453845-1000 (1000mA)

common minus connector:

Art.Nr. 89453845-350GMDE (350mA)

Art.Nr. 89453845-500GMDE (500mA)

Art. Nr. 89453845-700GM (700mA)

Art. Nr. 89453845-1000GM (1000mA)

# DALI 2Ch LED-Dimmer CC Control Gear

## Overview

- 2 channel DALI LED-Dimmer
- suitable for constant current LED-modules
- **Operating Mode DT6:** individual channel control via 2 DALI addresses
- **Operating Mode Balance&Dim:** control by 2 DALI-addresses, one for adjusting the light level and one for adjusting the channel balance (e.g. colour temperature)
- **Operating Mode Dim2Warm:** one DALI-address for simultaneous adjustment of light level and colour temperature
- **SwitchDim2:** 2 switch-inputs offer control of light level and colour without DALI
- dimming range 0.1%-100%
- adjustable PWM-frequency (122Hz/244Hz/488Hz/976Hz)
- types for constant currents of 350mA, 500mA, 700mA and 1000mA
- types with common plus and common minus connector available
- compact types for integration in luminaires or remote ceiling
- supply voltage from 12V to 48V DC
- output voltage up to 45VDC
- integrated short circuit protection
- low standby power consumption
- high efficiency
- configuration via PC-software DALI-Cockpit and DALI USB-interface
- user-friendly factory default settings

## Specification, Characteristics

### common plus connector:

| type           | DALI 2Ch CC<br>350/500mA      | DALI 2Ch CC<br>350/500mA DE | DALI 2Ch CC<br>700mA | DALI 2Ch CC<br>1000mA |
|----------------|-------------------------------|-----------------------------|----------------------|-----------------------|
| article number | 89453845-350/<br>89453845-500 | 89453845-<br>350DE/500DE    | 89453845-<br>700     | 89453845-1000         |

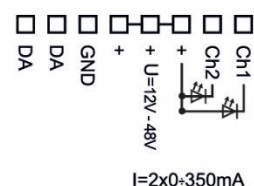
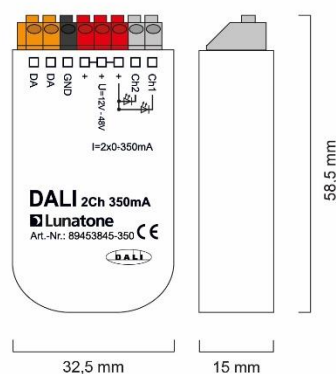
### electrical data:

|   |  |                    |        |        |
|---|--|--------------------|--------|--------|
| supply voltage $V_{in}$                   | 12VDC-48VDC  |                    |        |        |
| max. input current $I_{inmax}$            | 700/1000 mA  | 700/1000mA         | 1400mA | 2000mA |
| max. output current per channel $I_{led}$ | 350/500 mA   | 350/500mA          | 700mA  | 1000mA |
| output voltage range $V_{led}$            | 3V-45V (at 48V supply)   |                    |        |        |
| control input                             | DALI   | DALI<br>SwitchDim2 |        |        |
| current consumption DALI                  | 2mA  |                    |        |        |
| number of DALI-addresses                  | operating mode DT6, Balance&Dim: 2<br>operating mode Dim2Warm: 1 |                    |        |        |
| standby power consumption (12V)           | ~ 180 mW   |                    |        |        |

| type                                   | DALI 2Ch CC<br>350/500mA                     | DALI 2Ch CC<br>350/500mA DE   | DALI 2Ch CC<br>700mA | DALI 2Ch CC<br>1000mA |
|--|--|---|----------------------|-----------------------|
| technical data:                        |  |   |                      |                       |
| power on behaviour                     | configurable via DALI: 0%-100% or last value |   |                      |                       |
| storage and transportation temperature | -20°C to +75°C                               |   |                      |                       |
| operational ambient temperature        | -20°C to +60°C                               |   |                      |                       |
| expected lifetime                      | >100000h at Tc<75°C                          |   |                      |                       |
| protection class                       | IP20   |   |                      |                       |
| max. connecting wire cross section     | up to 1.5 mm <sup>2</sup>                    | up to 1.5 mm <sup>2</sup> ,<br>supply (V+, V-): up to 2.5 mm <sup>2</sup> |                      |                       |
| dimensions (LxWxH)                     | 59mmx33mmx15mm                               | 120mmx30mmx22mm   | 120mmx41mmx22mm      |                       |
| housing/mounting                       | back box                                     | remote ceiling  |                      |                       |

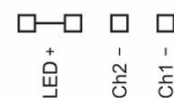
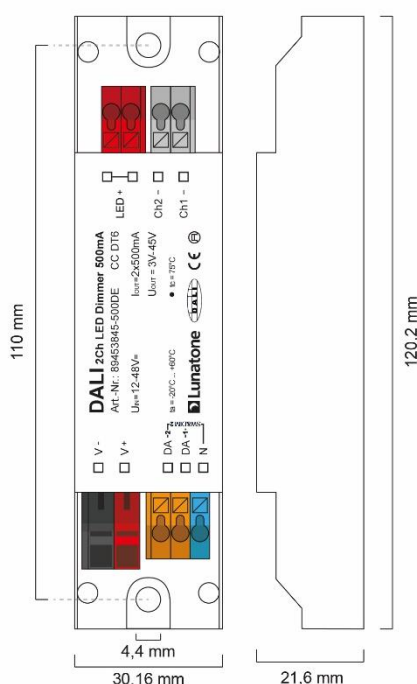
on request: output currents from 100mA to 1000mA available

for constant currents up to 500mA:



connection plan (common plus, back box)

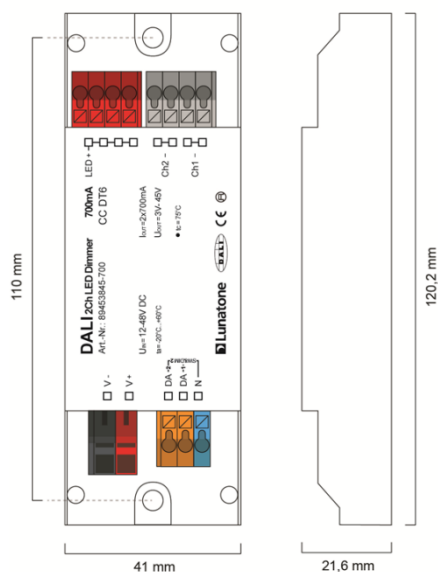
dimensions (common plus, back box)



connection plan (common plus, remote ceiling)

dimensions (common plus, remote ceiling)

for constant currents >500mA



dimensions (common plus, remote ceiling)



connection plan (common plus, remote ceiling)

#### common minus connector:

| type           | DALI 2CH CC<br>350/500mA GMDE | DALI 2CH CC<br>700mA GM | DALI 2Ch CC 1000mA<br>GM |
|----------------|-------------------------------|-------------------------|--------------------------|
| article number | 89453845-<br>350GMDE/500GMDE  | 89453845-700GM          | 89453845-1000GM          |

#### electrical data:

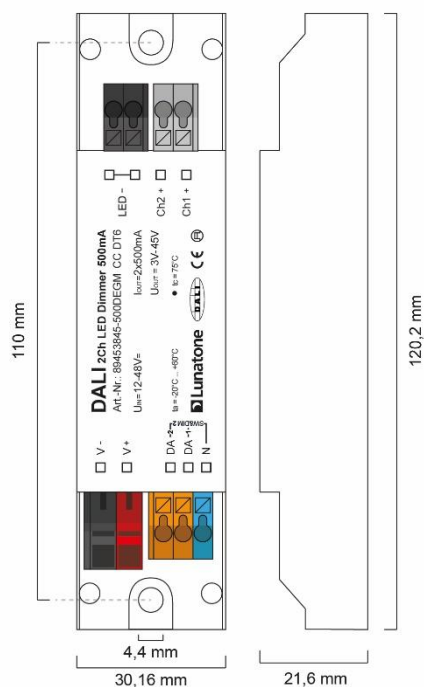
|  |  |        |        |
|--|--|--------|--------|
| supply voltage $V_{in}$                | 12VDC-48VDC  |        |        |
| max. input current $I_{inmax}$         | 700/1000mA   | 1400mA | 2000mA |
| max. output current /channel $I_{led}$ | 350/500mA  | 700mA  | 1000mA |
| output voltage range $V_{led}$         | 3V-45V (at 48V supply)   |        |        |
| control input                          | DALI<br>SwitchDim2   |        |        |
| current consumption DALI               | 2mA  |        |        |
| number of DALI-addresses               | operating mode DT6, Balance&Dim: 2<br>operating mode Dim2Warm: 1 |        |        |
| standby power consumption (12V)        | ~ 180 mW   |        |        |

#### technical data:

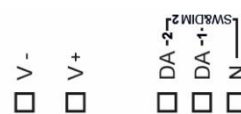
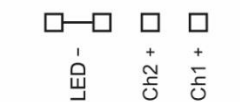
|  |   |                     |  |
|--|---|---------------------|--|
| power on behaviour                     | configurable via DALI: 0%-100% or last value                              |                     |  |
| storage and transportation temperature | -20°C to +75°C  |                     |  |
| operational ambient temperature        | -20°C to +60°C  |                     |  |
| expected lifetime                      | >100000h (at Tc<75°C)   |                     |  |
| protection class                       | IP20  |                     |  |
| max. connecting wire cross section     | up to 1.5 mm <sup>2</sup> ,<br>supply (V+, V-): up to 2.5 mm <sup>2</sup> |                     |  |
| dimensions (LxWxH)                     | 120mm x30mmx22mm  | 120mm x 41mm x 22mm |  |
| housing/mounting                       | remote ceiling  |                     |  |

on request: output currents from 100mA to 1400mA available

for constant currents up to 500mA (700mA on request):

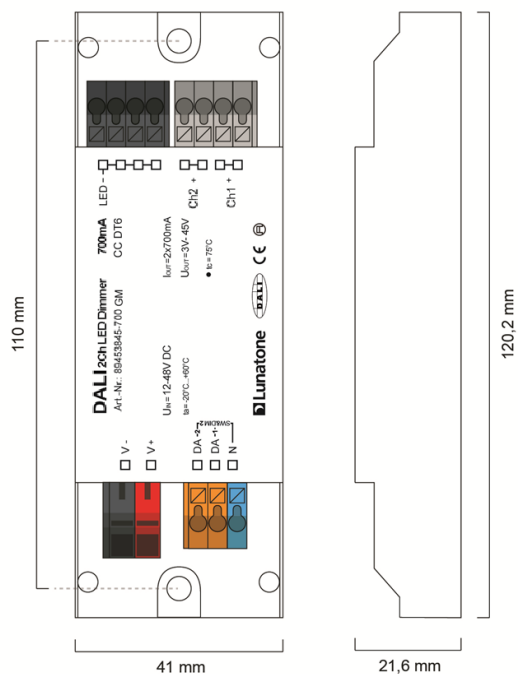


dimensions (common minus, remote ceiling)

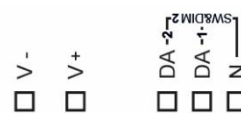
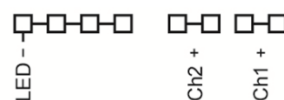


connection plan

for constant currents > 500mA:



dimensions (common minus, remote ceiling)



connection plan GM



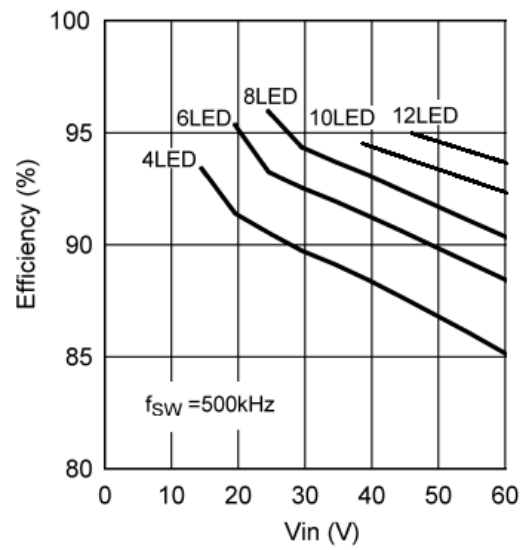
**Hint:**

For highest efficiency the input voltage should range between 3V and 10V above the LED-voltage:

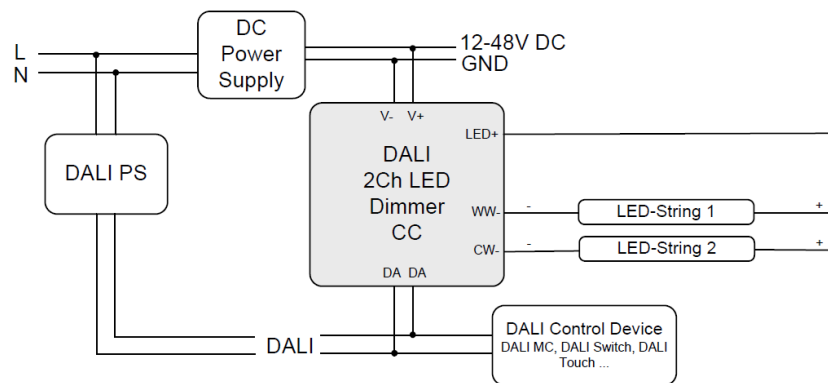
4-6 LEDs: 24V

6-9 LEDs: 36V

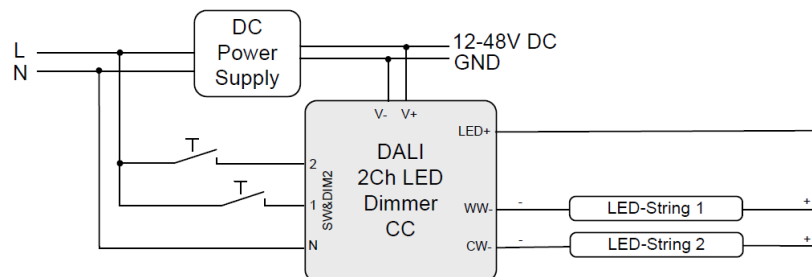
10-12 LEDs: 48V



DALI (common plus connector type):



SwitchDim2 (common plus connector type):





## Operating Modes

The device offers several operating modes:

### DT6 (factory default)

In this operating mode each channel can be controlled by its own DALI address (Device Type 6).

Alternatively the device can be controlled using 2 switch-inputs for mains voltage (SwitchDim2):

SwD1: light level

short press: On/Off

long press: dimming

SwD2: scene selector (short press)

### Balance&Dim

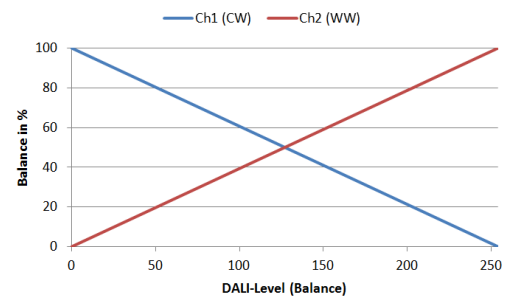
This operating mode is also suitable for operating tunable white luminaires using two DALI-addresses. The first controls the light level and the second is used for changing the distribution on the output channels (e.g. for tunable white applications or balancing direct/indirect lighting).

The Balance&Dim mode allows colour temperature adjustments without affecting the light level and vice versa. For each channel only DALI-standard commands like dim up/down but also DAP are used. Thus the device can be used with all common controls and gateways (e.g. KNX). The Balance&Dim mode provides an alternative to the DT8-Tc mode.

Can be operated via DALI or SwitchDim2:

DALI-address 1, SwD1: light level

DALI-address 2, SwD2: balance



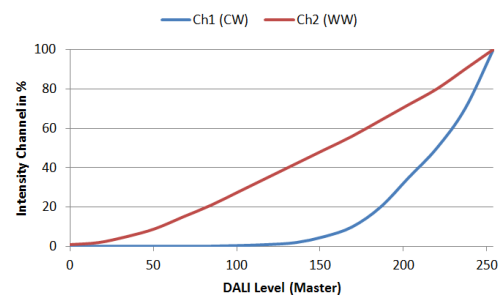
### Dim2Warm

Both output channels are controlled by one DALI-address or SwD-input. The balance is coupled directly to the DALI dim level – the smaller the dim level the warmer the light.

DALI-address 1, SwD1: Dim2Warm (Master)

short press: On/Off

long press: dimming

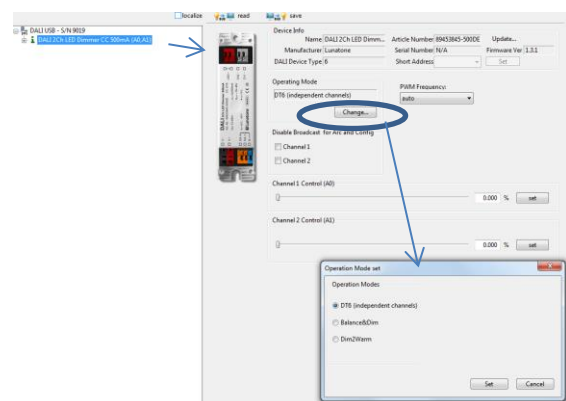


SwD2: scene selector

### Selection of operating mode

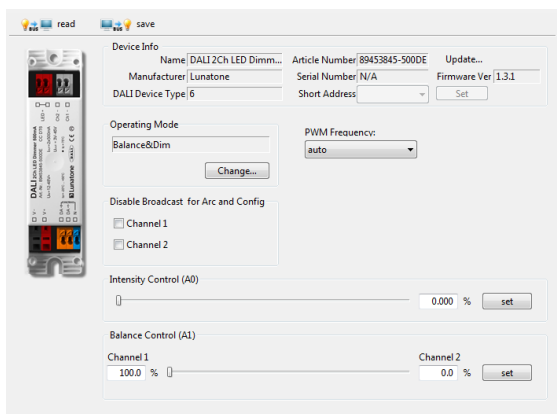
With the help of the PC-software tool DALI-Cockpit the operating mode can be easily set on the general settings page.

Operating mode DT6:

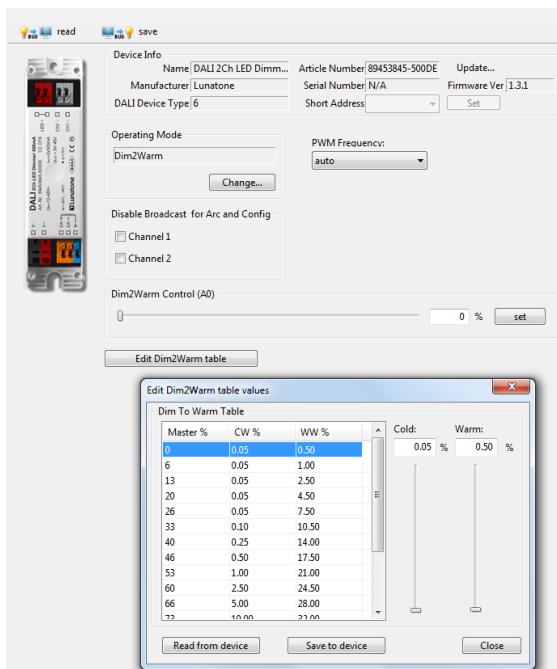


In addition, on the same page the PWM-frequency can be selected and basic control elements for testing each operating modes are available (2 sliders for the level of each channel in operating mode DT6; Balance&Dim: slider for level and balance, Dim2Warm: slider for input value adaption and Edit-Function for the Dim2Warm-table). Furthermore the broadcast control can be deactivated for each channel individually.

## Operating Mode Balance&Dim:



## Operating Mode Dim2Warm:



Switching between operating modes can also be done with the help of the DALI-command SET OPERATING MODE (IEC 62386-102 Ed.2). When changing the operating mode the

number of used DALI-addresses can change as well and this requires a new addressing procedure. In the DALI-Cockpit this address assignment is performed automatically.

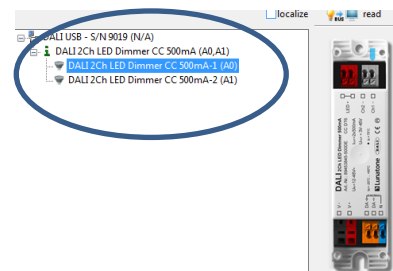
## Operating Mode:

| Number | Operating Mode        |
|--------|-----------------------|
| 0x0    | DT6 (factory default) |
| 0x90   | DT6                   |
| 0x94   | Balance&Dim           |
| 0x95   | Dim2Warm              |

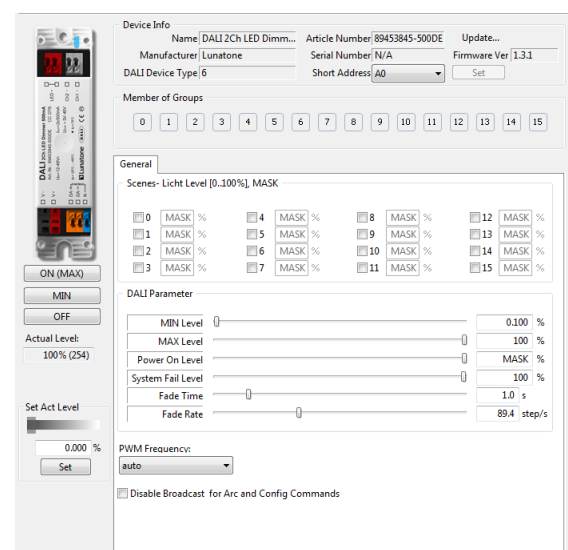
## Additional Settings

Besides the settings on the general page each channel can be selected separately in the component tree for individual configuration.

## Component Tree:



Settings for each channel (similar for all operating modes), the displayed parameters are the factory default values:



For each address the group membership can be set as well as scene values and DALI-parameters. In Balance&Dim operating mode all values assigned to channel 2 are representing the balance.

## Factory Default Settings

Before the initial addressing is performed, the device can already be controlled by group addresses G0 and G1. This predefined grouping will be deleted during the first addressing procedure. Afterwards groups can be assigned as usual (e.g. with the help of the DALI Cockpit). By sending a DALI-Reset command the device is set to DALI default values as defined in the standard.

Summary of the factory default settings (delivery state):

|                                  |   |      |      |
|----------------------------------|---|------|------|
| operating mode                   | DT6                                       |      |      |
| SwitchDim2                       | SwD1: light level<br>SwD2: scene selector |      |      |
| Min Level                        | 0.1%                                      |      |      |
| PowerOn Level                    | MASK (last value)                         |      |      |
| Fade Time                        | 2 (1s)                                    |      |      |
| Fade Rate                        | 5 (89.4 steps/s)                          |      |      |
| PWM-frequency                    | 122Hz                                     |      |      |
| Groups before initial addressing | G0 – channel 0<br>G1 – channel 1          |      |      |
| predefined scene values          | Scene                                     | Ch1  | Ch2  |
|                                  | 0, 4, 8, 12                               | 100% | 0%   |
|                                  | 1, 5, 9, 13                               | 0%   | 100% |
|                                  | 2, 6, 10, 14                              | 100% | 100% |
|                                  | 3, 7, 11, 15                              | 0%   | 0%   |

## Purchase Order Information

**Art.Nr. 89453845-xxx:** DALI 2Ch LED Dimmer, CC – constant current xxxmA, **common plus connector**, supply 12V-48V DC, output voltage range 3V-45V, 100mA -500mA, back box

**Art.Nr. 89453845-xxxDE:** DALI 2Ch LED Dimmer, CC – constant current xxxmA, **common plus connector**, supply 12V-48V DC, output voltage range 3V-45V, **SwitchDim2**, 100mA-500mA, remote ceiling & integration in luminaires

**Art.Nr. 89453845-xxx:** DALI 2Ch LED Dimmer, CC – constant current xxxmA, **common plus connector**, supply 12V-48V DC, output voltage range 3V-45V, **SwitchDim2**, 500mA -1000mA, , remote ceiling & integration in luminaires

**Art.Nr. 89453845-xxxGMDE:** DALI 2Ch LED Dimmer, CC – constant current xxxmA, **common minus connector**, supply 12V-48V DC, output voltage range 3V-45V, **SwitchDim2**, 100mA-500mA, , remote ceiling & integration in luminaires

**Art.Nr. 89453845-xxxGM:** DALI 2Ch LED Dimmer, CC – constant current xxxmA, **common minus connector**, supply 12V-48V DC, output voltage range 3V-45V, **SwitchDim2**, 500mA -1400mA, , remote ceiling & integration in luminaires

## Additional Information

Datasheets and manuals

<https://jumitech/produkter>

DALI-Cockpit – free configuration tool from

Lunatone for DALI systems

<http://lunatone.at/en/downloads/Lunatone-DALI-Cockpit.zip>

## Contact

Technical Support: [support@jumitech.dk](mailto:support@jumitech.dk)

Requests: [salg@jumitech.dk](mailto:salg@jumitech.dk)

[www.jumitech.dk](http://www.jumitech.dk)

# JUMiTECH



## Disclaimer

Subject to change. Information provided without guarantee.  
The datasheet refers to the current delivery.

The compatibility with other devices must be tested in advance  
to the installation.



## DALI 1Ch LED Dimmer CC

### Datasheet Control Gear

#### 1-channel LED Dimmer (CC, DT6)

Art. Nr. 89453844-350 (350mA)

Art. Nr. 89453844-500 (500mA)

Art. Nr. 89453844-700 (700mA)

Art. Nr. 89453844-700DE (700mA)

Art. Nr. 89453844-1000DE (1000mA)

Art. Nr. 89453844-1500DE (1500mA)

Art. Nr. 89453844-2000DE (2000mA)

Art. Nr. 89453844-2500DE (2500mA)

# DALI 1Ch LED Dimmer CC Control Gear

## Overview

- 1 channel DALI LED-Dimmer
- suitable for constant current LED-modules
- **SwitchDim2:** 2 switch-inputs offer control of light level and colour without DALI, up from FW 4.0 device can be alternatively controlled directly by a motion sensor (corridor function)
- dimming range 0.1%-100%
- adjustable PWM-frequency (122Hz/244Hz/488Hz/976Hz)
- types for constant currents of 350mA to 2800mA
- compact types for integration in luminaires or remote ceiling
- supply voltage from 12V to 48V DC
- output voltage up to 45VDC
- integrated short circuit protection
- low standby power consumption
- high efficiency
- configuration via PC-software DALI-Cockpit and DALI USB-interface
- user-friendly factory default settings

## Specification, Characteristics

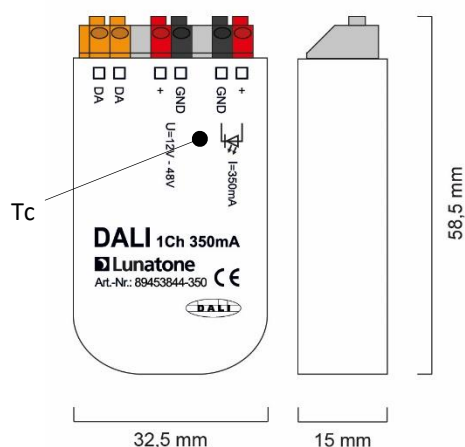
|   |  |  |                                    |
|---|--|--|------------------------------------|
| type                                      | DALI 1Ch LED-Dimmer CC                       |  |                                    |
| article number                            | 89453844-350<br>89453844-500<br>89453844-700 | 89453844-700DE<br>89453844-1000DE<br>89453844-1500DE | 89453844-2000DE<br>89453844-2500DE |
| electrical data:                          |  |  |                                    |
| supply voltage $V_{in}$                   | 12VDC-48VDC                                  |  |                                    |
| max. input current $I_{inmax}$            | 350mA / 500mA / 700mA                        | 700mA/1000mA/1500mA                                  | 2000mA/2500mA                      |
| max. output current per channel $I_{led}$ | 350mA / 500mA / 700mA                        | 700mA/1000mA/1500mA                                  | 2000mA/2500mA                      |
| output voltage range $V_{led}$            | 3V-45V (at 48V supply)                       |  |                                    |
| control input                             | DALI   | DALI<br>SwitchDim2 / corridor function               |                                    |
| current consumption DALI                  | 2mA  |  |                                    |
| number of DALI-addresses                  | 1  |  |                                    |
| standby power consumption (12V)           | 180mW  |  |                                    |

| type           | DALI 1Ch LED-Dimmer CC                       |  |                                    |
|----------------|--|--|------------------------------------|
| article number | 89453844-350<br>89453844-500<br>89453844-700 | 89453844-700DE<br>89453844-1000DE<br>89453844-1500DE | 89453844-2000DE<br>89453844-2500DE |

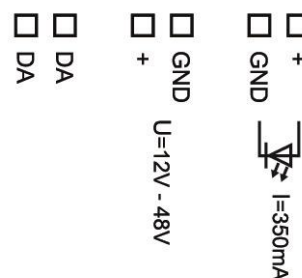
## technical data:

|  |  |   |                 |
|--|--|---|-----------------|
| power on behaviour                     | configurable via DALI: 0%-100% or last value |   |                 |
| storing and transportation temperature | -20°C ... +75°C                              |   |                 |
| operating ambient temperature Ta       | -20°C ... +60°C                              |   |                 |
| expected lifetime                      | >100000h<br>at Tc<75°C                       |   |                 |
| protection class                       | IP20   |   |                 |
| max. connecting wire cross section     | up to 1.5 mm <sup>2</sup>                    | up to 1.5 mm <sup>2</sup> ,<br>supply (V+, V-): up to 2.5 mm <sup>2</sup> |                 |
| housing/mounting                       | back box                                     | remote ceiling  |                 |
| dimensions (LxWxH)                     | 59mmx33mmx15mm                               | 120mmx30mmx22mm   | 120mmx41mmx22mm |

for constant currents up to 700mA (DALI):

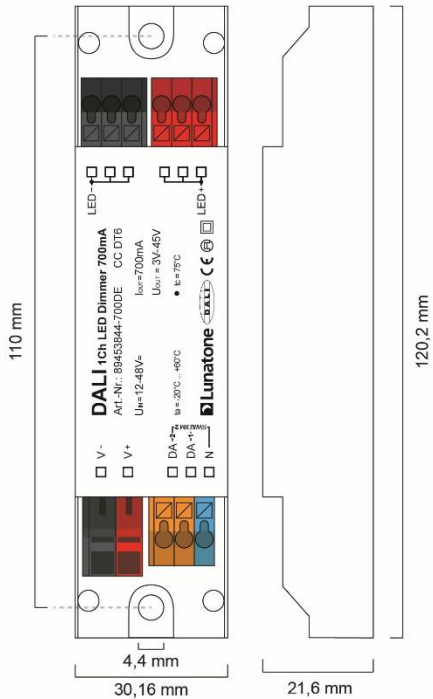


dimensions

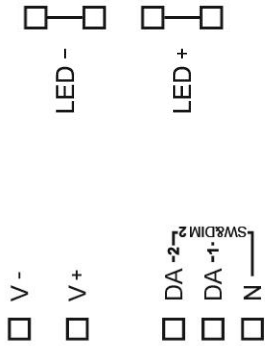


connection plan

for constant currents up to 1500mA (DALI&SwitchDim2):

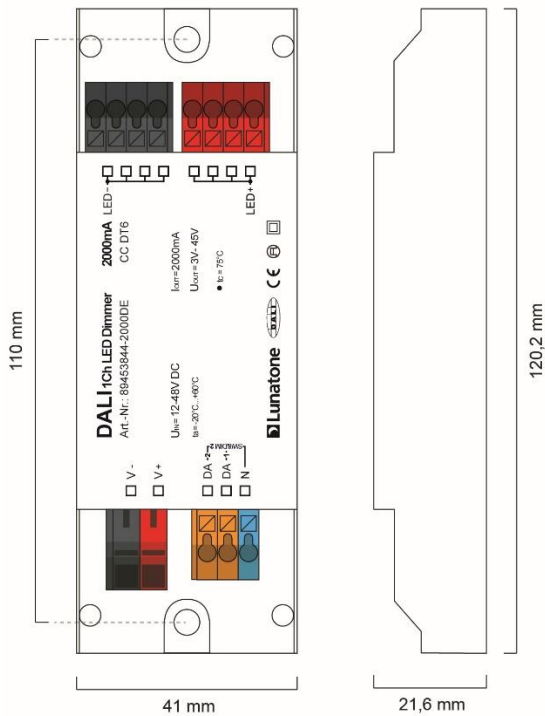


dimensions

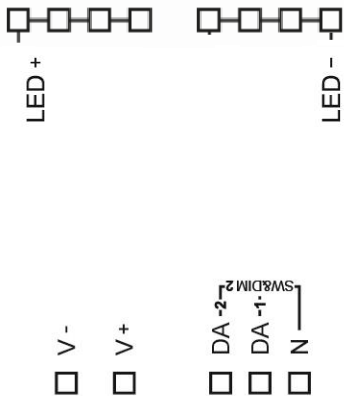


connection plan

for constant currents from 1500mA (DALI&SwitchDim2):



dimensions



connection plan





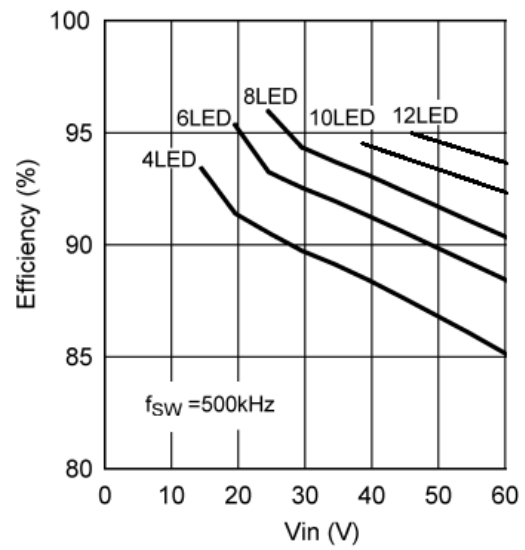
## Hint:

For highest efficiency the input voltage should range between 3V and 10V above the LED-voltage:

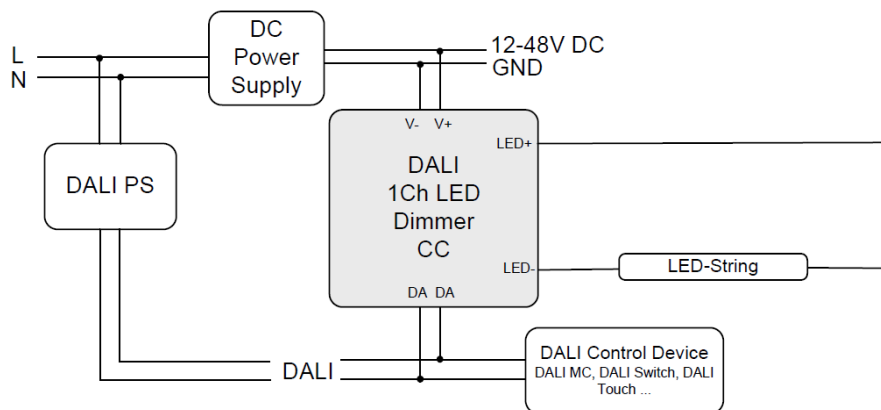
4-6 LEDs: 24V

6-9 LEDs: 36V

10-12 LEDs: 48V

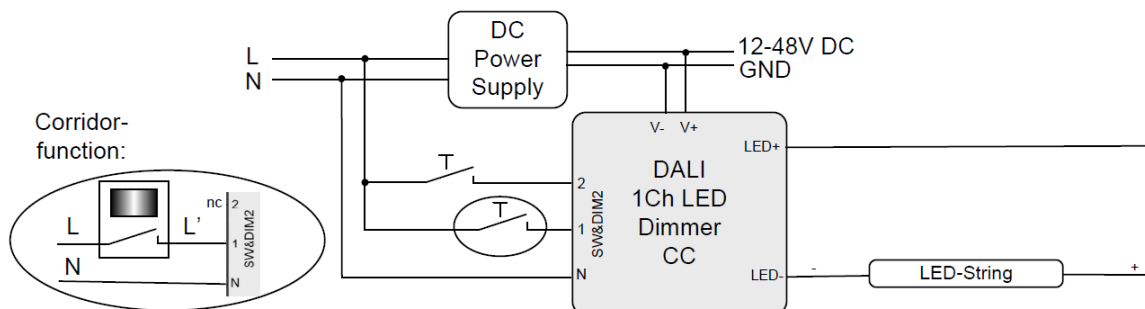


## DALI:



## SwitchDim2:

- control via 2 pushbuttons or
- alternatively by a motion sensor with relay output (on input SwD1)



## Operating Modes

The output is controlled by by its DALI address (Device Type 6).

Alternatively the device can be controlled using 2 switch-inputs for mains voltage (SwitchDim2):

SwD1: light level

short press: On/Off

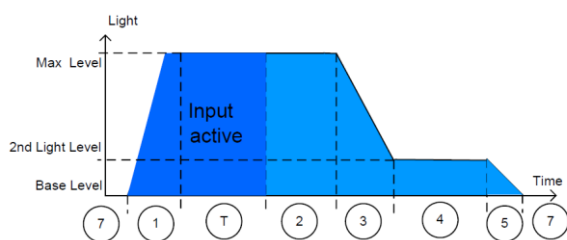
long press: dimming

SwD2: scene selector (short press)

If the SwD1-input is pressed for 2 minutes the device changes the operating mode to „corridorfunction“. This mode stays active until the device is power cycled (on power up the standard switchdim operation is active).

### Corridor Function (up from FW 4.0)

This mode provides a staircase function (e.g. to control the device directly with the relay output of one or more motion sensors). On input action the LED-output is switched to max level. After the holdtime the output switches to a second light value before switching to the base level. If the input is activated again, the sequence is restarted.



sequence of corridor function

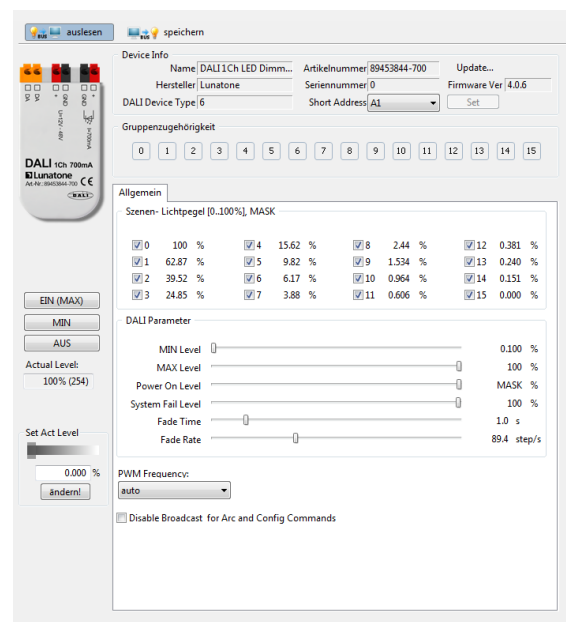
States and Default values of the corridor function:

|                         |            |
|-------------------------|------------|
| 1 – Fade-In Time:       | immediat   |
| 2 – Holdtime Max Level: | 10 minutes |
| 3 – Fade Time:          | 5 seconds  |
| 4 – HoldTime 2nd Level: | 10 minutes |
| 5 – Fade Out Time:      | 5 seconds  |
| Max Level (P,2):        | 100%       |

|                      |     |
|----------------------|-----|
| 2nd Light Level (4): | 50% |
| Base Level (7):      | 0%  |

### DALI-Cockpit Settings:

With the help of the DALI-Cockpit software the device can be configured. The device can be assigned to groups, scene values can be set and parameters can be defined (the parameters shown in the pic are default values):



### Factory Default Settings

Before the initial addressing is performed, the device can already be controlled by group address G0. This predefined grouping will be deleted during the first addressing procedure. Afterwards groups can be assigned as usual (e.g. with the help of the DALI Cockpit). By sending a DALI-Reset command the device is set to DALI default values as defined in the standard.

Summary of the factory default settings  
(delivery state):

|                                  |  |   |
|----------------------------------|--|---|
| operating mode                   | DT6  |   |
| SwitchDim2                       | SwD1: light level<br>SwD2: scene selector  |   |
| Min Level                        | 0.1%<br>back box type: 1%  |   |
| PowerOn Level                    | MASK (last value)  |   |
| Fade Time                        | 2 (1s)   |   |
| Fade Rate                        | 5 (89.4 steps/s)   |   |
| PWM-frequency                    | 122Hz<br>back box type: 976Hz  |   |
| Groups before initial addressing | G0   |   |
| scene values:                    | Scene 0: 254<br>Scene 1: 237<br>Scene 2: 220<br>Scene 3: 203<br>Scene 4: 186<br>Scene 5: 169<br>Scene 6: 152<br>Scene 7: 135 | Scene 8: 118<br>Scene 9: 101<br>Scene 10: 84<br>Scene 11: 67<br>Scene 12: 50<br>Scene 13: 33<br>Scene 14: 16<br>Scene 15: 0 |
|                                  | back box type:<br>all scene values set to MASK   |   |

1500mA-2800mA on request), supply 12V-48V DC, output voltage: 3V-45V,  
SwitchDim2/Corridorfunction, remote ceiling & integration in luminaires;

## Additional Information

Datasheets and manuals

<https://jumitech/produkter>

DALI-Cockpit – free configuration tool from Lunatone for DALI systems

<http://lunatone.at/en/downloads/Lunatone-DALI-Cockpit.zip>

## Contact

Technical Support: [support@jumitech.dk](mailto:support@jumitech.dk)

Requests: [alg@jumitech.dk](mailto:alg@jumitech.dk)

[www.jumitech.dk](http://www.jumitech.dk)

## Purchase Order Information

**Art.Nr. 89453844-350/500/700:** DALI 1Ch LED Dimmer, CC – constant current 350/500/700mA (other currents from 100mA-700mA on request), supply 12V-48V DC, output voltage range 3V-45V, back box;

**Art.Nr. 89453844-700DE/1000DE/1500DE,** DALI 1Ch LED Dimmer, CC – constant current 700/1000/1500mA (other currents from 100mA-1500mA on request), supply 12V-48V DC, output voltage: 3V-45V, SwitchDim2/Corridorfunction, remote ceiling & integration in luminaires;

**Art.Nr. 89453844-2000DE/2500DE,** DALI 1Ch LED Dimmer, CC – constant current 2000mA/2500mA (other currents from

# JUMITECH



## Disclaimer

Subject to change. Information provided without guarantee.  
The datasheet refers to the current delivery.

The compatibility with other devices must be tested in advance to the installation.